

LED Outdoor Emergency Egress Lighting With Night Lighting

Linear LED outdoor egress with emergency lighting, night lighting and Self-test diagnostics with all Battery Backup (BB) models. A dramatic new and compact architectural design, providing powerful emergency and normal lighting for over-door and other exterior locations, The lamp housing and canopy are fabricated from extruded aluminum, in enamel finishes, with rugged sealed diffuser lens and stainless hardware, for wall or ceiling mount. High efficiency LEDs and full 90° cut-off provide uniform emergency and night lighting on the extended egress pathway. All models are outdoor rated, UL wet location, ADA compliant, and exceed requirements of UL Standard 924 and NFPA 101. Designed and manufactured in the USA.

FEATURES

- Extremely low profile, formed aluminum housing. Custom colors are available, including brushed aluminum finishes.
- Uniform elongated lighting pattern over required path of Egress.
- Full 90° cut-off.
- Three versions are available: RE(Central Battery), BB(Battery Backup), and AC(120/277VAC supply)
- Normal-on switch allows timed control of night lighting
- IP66 housing seals against heavy water spray and fine dust ingress
- Wide lighting distribution designed for entrance walkways.
- Standard CRI 5000K, with optional color corrections filters for 2900K, 3200K and 3800K.
- American manufactured major components comply with ARRA (American Recovery and Reinvestment Act) requirements and Buy American provisions.

ELECTRONICS

- Self-Test/Self-Diagnostic operation is standard in battery backup versions.
- Line latch circuit prevents unwanted emergency activation at installation.
- Low Voltage Disconnect prevents deep battery discharge
- High efficiency charger and Li-ion Battery
- Lamps are connected in parallel. If one lamp fails, one or more lamps will continue in operation.
- Universal 120/277 VAC input for standard battery or AC unit.
- Over 50,000 hour lamp life in normal use
- Standard Operating Temperature
BB: 0°C to 50°C
AC & RE: -40°C to 50°C

PROJECT:

TYPE:

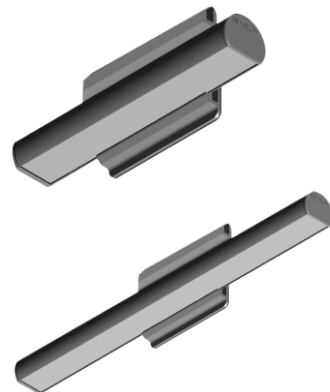
CATALOG #:

MOONLITE LED®

Series MAE

REV #: MAE.09.25.23

User's Manual



CODES

- Manufactured and tested to UL Standard 924, NFPA Life Safety Code101, and certified to Ip66.

WARRANTY

- 10 year total customer satisfaction warranty. For details see Signtex product catalog technical data section.



FIXTURE ORDERING INFORMATION EXAMPLE: MAEBB10AW-SD

MAE	BB	10	A	W	SD
SERIES	OPERATION	POWER	HOUSING COLOR	MOUNT	OPTIONS
MAE	BB Battery Unit	10 10 watts emergency and normal power	W Satin White	T Top	SD Night lighting with control switch for BB operation 120/277V
	AC No Battery	20 20 watts emergency and normal power*	K Black	W Wall	DAC Dual AC input
	RE Central Battery		A Aluminum		CW1 3800K
			B Dark Bronze		CW2 3200K
			X Custom		CW3 2900K
					SFF Surface Mount Fitted.(RE Models Only)

* 20 watts Battery unit includes RPS see page3

MOONLITE LED®

LED Outdoor Emergency Egress Lighting

Series MAE

REV #: MAE.09.25.23

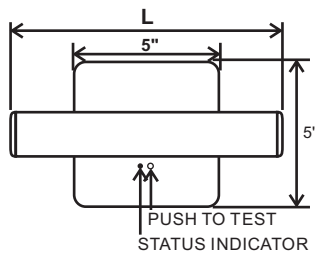
SUGGESTED SPECIFICATIONS:

Install MOONLITE™ Series MAE architectural emergency lighting fixture manufactured by Signtex Lighting, Inc. The MAE assembly shall be listed for installation in wet locations in compliance with UL 924 and IP66 standards, available as unit equipment or as a remote connected to a central battery power source. Upon loss of AC building power, lighting will be activated for a minimum of 90 minutes under battery power, in compliance with UL 924 and NFPA LSC Code 101. In remote configuration, the unit may be specified to operate continuously for security or night lighting, as required. The battery charger and power supply shall have universal input of 120/277 VAC, with brownout and LVD circuit protection. Auto battery diagnostics available for all models and shall perform all test functions specified by UL 924 and NFPA 101.

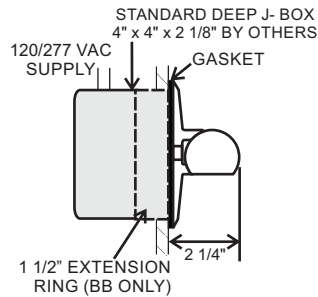
MOUNTING DATA & DIMENSIONS:

1) MAE-BB10, AC & RE MODELS

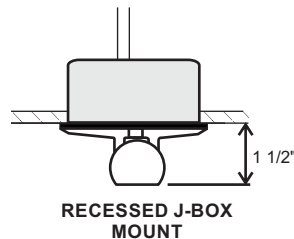
STANDARD



WALL MOUNT



CEILING MOUNT

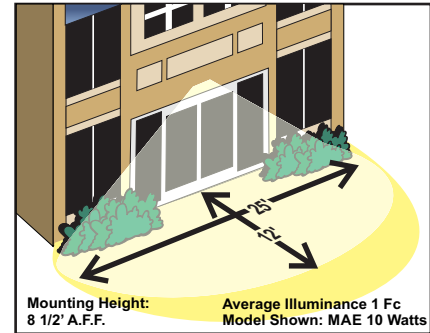


Length Table

POWER	L
10 Watts	10"
20 Watts*	19"

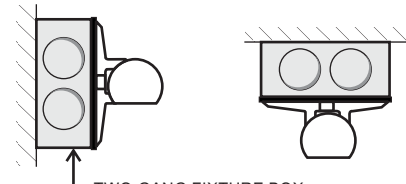
*RE & AC 20 Watts Models

SPACING GUIDE

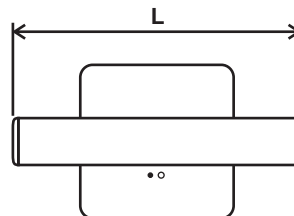
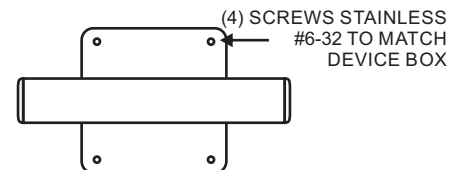


NOTE: FOR REFERENCE ONLY. STANDARD REFLECTANCES 80/50/20. SIGNTEX IS NOT RESPONSIBLE FOR SPECIFIC CONDITIONS THAT MAY ALTER THE RESULTS.
CONTACT SIGNTEX FOR LAYOUT ASSISTANCE
Code Compliant Emergency lighting layouts provided free of charge!

SURFACE MOUNT-FITTED (RE Models Only)



TWO-GANG FIXTURE BOX:
DIE CAST ALUMINUM 2" DEEP 28 CUBIC IN.
(Supplied by others)
EXAMPLE: BELL #5346-0 OR EQUAL



SELF-TEST DIAGNOSTIC FUNCTIONS BB MODELS WITH DG FUNCTION

STATUS	LED DISPLAY
NORMAL FULL CHARGE	● GREEN ON
NORMAL FAST CHARGE	● ORANGE ON
FAILED BATTERY	● RED FLASH FAST
FAILED LAMP	● GREEN FLASH
FAILED TRANSFER	● ORANGE FLASH
FAILED CHARGER	● RED FLASH SLOW

NIGHT LIGHTING CONTROL

RE MODELS: Requires 'SEC' option with central battery

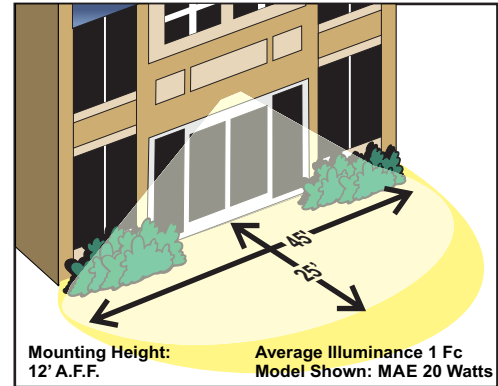
BB MODELS: Requires option 'SD' for connection to 120/277 VAC

2) MAE-BB20

MAXIMUM WIRING LENGTH FROM 20 WATTS RPS TO FIXTURE

WIRING SIZE AWG	LENGTH (FT)
	MAEBB-20
#18	60
#16	100
#14	160
#12	250

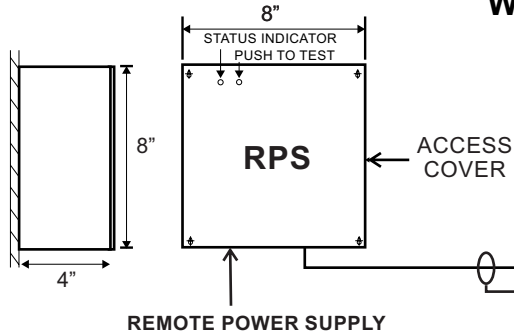
MAE20 SPACING GUIDE



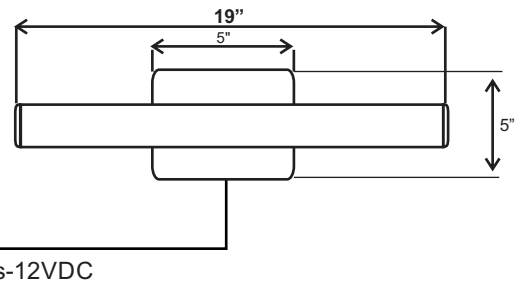
NOTE: FOR REFERENCE ONLY. STANDARD REFLECTANCES 80/50/20. SIGNTEX IS NOT RESPONSIBLE FOR SPECIFIC CONDITIONS THAT MAY ALTER THE RESULTS.

CONTACT SIGNTEX FOR LAYOUT ASSISTANCE
Code Compliant Emergency lighting layouts provided free of charge!

SURFACE MOUNT

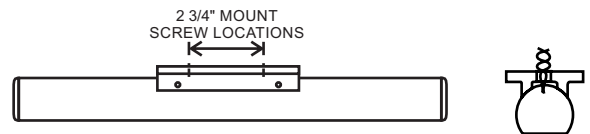


WALL MOUNT

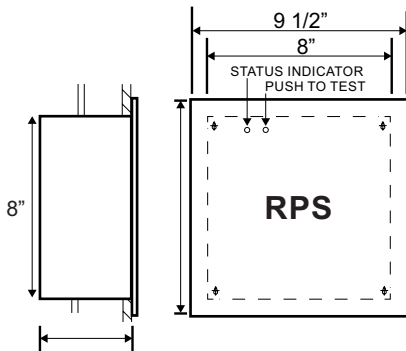


Typical Wiring Specification:
UL AWM Style: Control Cable #20 AWG 300V

CEILING MOUNT



RECESS MOUNT (OPTION REC)



SELF-TEST DIAGNOSTIC FUNCTIONS BB MODELS WITH DG FUNCTION

STATUS	LED DISPLAY
NORMAL FULL CHARGE	GREEN ON
NORMAL FAST CHARGE	ORANGE ON
FAILED BATTERY	RED FLASH FAST
FAILED LAMP	GREEN FLASH
FAILED TRANSFER	ORANGE FLASH
FAILED CHARGER	RED FLASH SLOW

DISTRIBUTOR

Contact Signtex for layout assistance.
Code compliant emergency lighting layouts provided!
Specifications and dimensions subject to change without notice.