

Installation Instructions & Users Manual

1. STANDARD SURFACE MOUNT

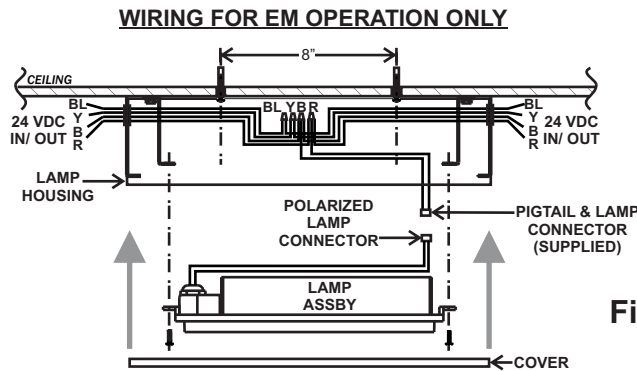
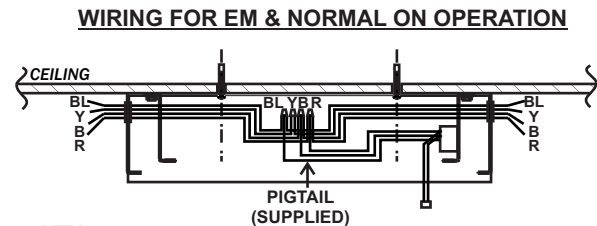


Fig.1



KEY

B= BLACK: COMMON: 12/24 VDC NEG -
Y= YELLOW: EXITS/CVRE: 12/24 VDC POS +
R= RED: EMERGENCY: 24VDC POS +
BL= BLUE: NORMAL ON LIGHTING (NOL): 24 VDC POS +

1. See Fig 1. Identify mounting position on ceiling in accordance with fixture layout specifications, and install (2) screw anchors, minimum size #10, at 8" between centers.
2. Insert small flat blade screwdriver or similar tool under notch at either end of cover, twist gently to release snap and lift cover. Unscrew (4) #8 lamp assembly screws, lift lamp assembly from Housing and disconnect lamp plug.
3. Mount housing to ceiling with (2) mount screws. Route 24VDC IN/OUT wiring from CBS branch circuit into Housing.
4. Connect wiring with standard wire nuts to the supplied wiring pigtail, as shown. For emergency lighting only operation only, connect RED and BLACK; for normally ON/security lighting operation, connect RED, BLACK and BLUE. (YELLOW wire is passed through and not connected to this fixture).
5. Reconnect lamp plug and reinstall lamp assembly with (4) #8 screws, and replace cover. Supply 24VDC power from central battery or normal **on/security power system to check lamp operation.**

2. SURFACE MOUNT WITH END BRACKETS

1. See Fig 2. Install (2) screw anchors at 15 1/2" centers.
2. Insert flat blade screwdriver under notch at end of cover, twist gently to release cover plate. Unscrew (4) #8 lamp assembly screws, lift lamp assembly from Housing and disconnect lamp plug.
3. Attach end brackets with (4) #8 screws and nuts as shown, mount housing assembly to ceiling and route 24VDC IN/OUT wiring from CBS branch circuit into housing.
4. Proceed as for STANDARD SURFACE MOUNT steps 4 - 5

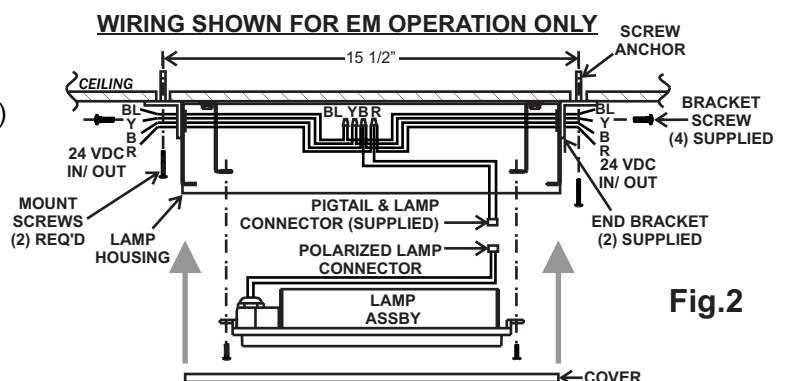


Fig.2

IMPORTANT SAFEGUARDS READ AND FOLLOW ALL SAFETY INSTRUCTIONS

1. Disconnect AC power before servicing.
2. Refer to wiring diagram for proper connections.
3. All servicing should be performed by qualified personnel.
4. Consult your local building code for approved wiring and installation.
5. Do not use outdoors.
6. Do not use this equipment for other than intended use.
7. Do not let power cords touch hot surfaces.
8. Mount and secure the fixture at a location and height to avoid ready access and tampering by unauthorized persons.
9. The use of accessory equipment is not recommended by the manufacturer and may cause an unsafe condition.

SAVE THESE INSTRUCTIONS

3. SURFACE MOUNT TO J-BOX

1. See Fig 3. Install standard 4" Octagon J-box centrally above installation point as shown and secure to ceiling using appropriate screw anchors.
2. Route 24VDC IN/OUT wiring from CBS branch circuit into j-box.
3. Proceed as for STANDARD SURFACE MOUNT steps 4 - 5.

WIRING SHOWN FOR EM & NORMAL ON OPERATION

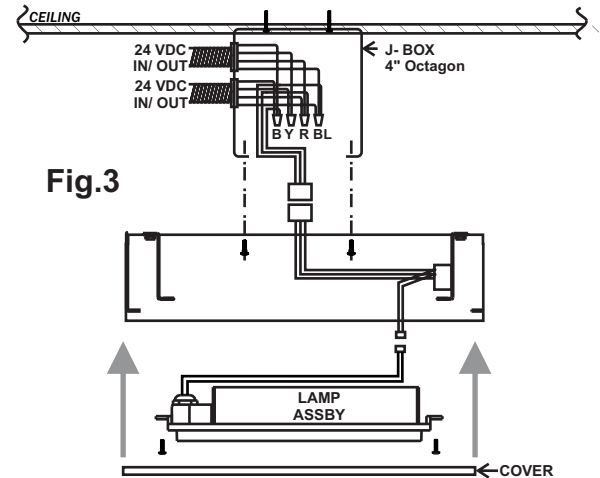


Fig.3

KEY

B= BLACK:COMMON: 12/24 VDC NEG -
Y= YELLOW: EXITS/ CVRE: 12/24 VDC POS +
R= RED: EMERGENCY: 24VDC POS +
BL= BLUE: NORMAL ON LIGHTING (NOL): 24 VDC POS +

4. RECESSED MOUNT: T-BAR CEILING

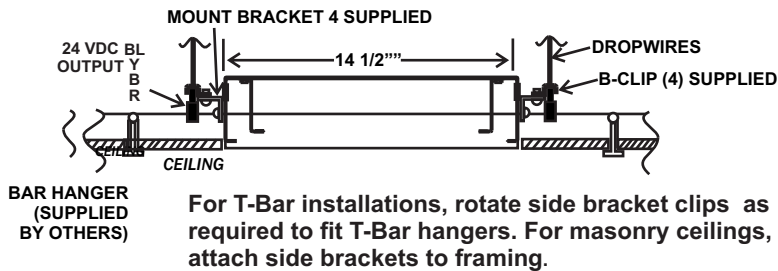
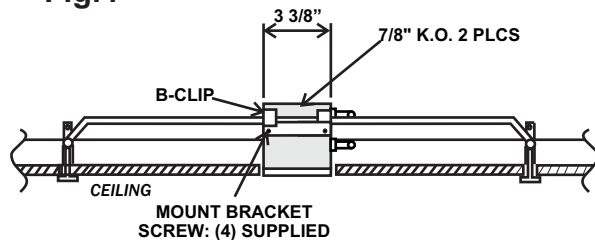
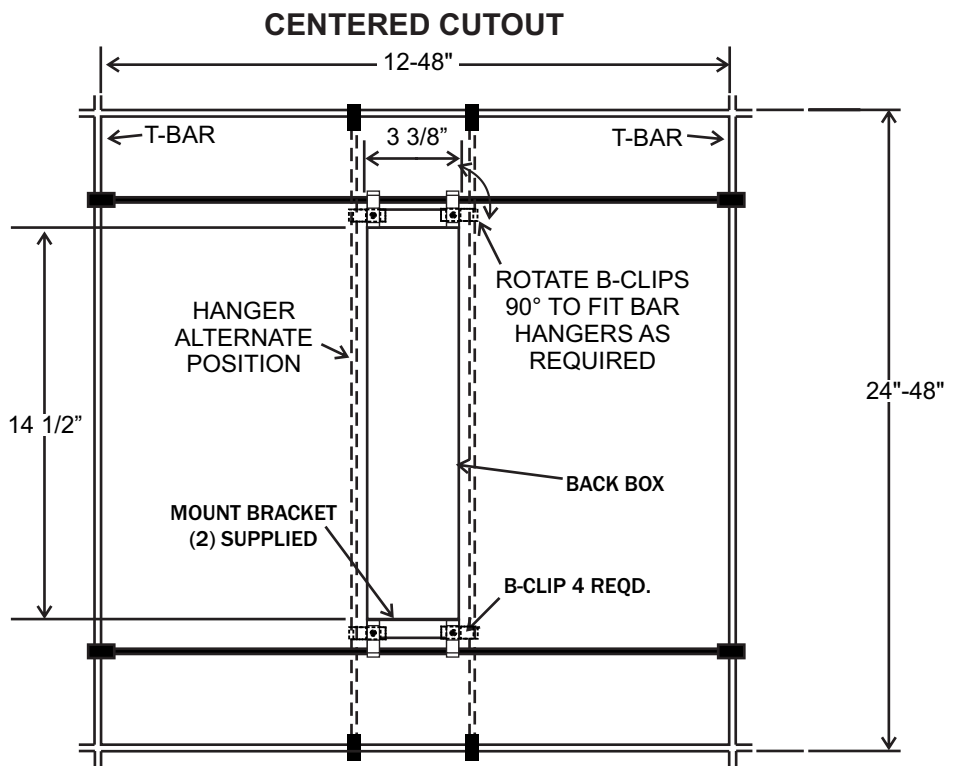


Fig.4



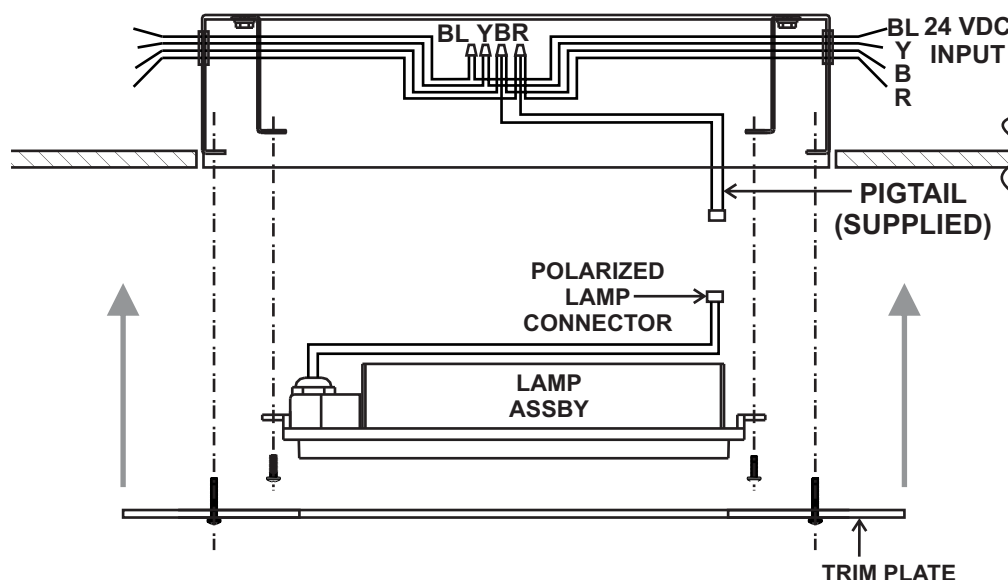
Install Housing in ceiling using supplied end brackets with B-Clips to framing or hanger bars (supplied by others). Long edges of Housing should be flush or just below finished panel surface.



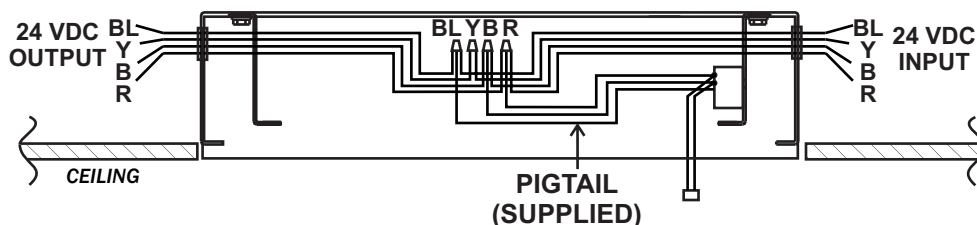
5. RECESSED MOUNT- WIRING

1. Route 24VDC IN/OUT wiring from CBS system into Housing.
2. Connect wiring with standard wire nuts to the supplied wiring pigtail, as shown. For emergency lighting operation only, connect RED and BLACK; for normally ON/security lighting operation, connect RED, BLACK and BLUE. (YELLOW wire is passed through and not connected to this fixture).
3. Connect lamp plug and install lamp assembly with (4) #8 screws. Attach Trim Plate with (2) color- matched #8-32 screws as shown.
4. Supply 24 VDC power from Central Battery System to check lamp operation.

WIRING FOR EM OPERATION ONLY



WIRING FOR EM & NORMAL ON OPERATION



KEY

B= BLACK:COMMON: 12/24 VDC NEG -
 Y= YELLOW: EXITS/CVRE: 12/24 VDC POS +
 R= RED: EMERGENCY: 24VDC POS +
 BL= BLUE: NORMAL ON LIGHTING (NOL): 24 VDC POS +

NOTES