

# Emergency Lighting Control

## For Use With Series CBS Central Battery System for Emergency Lighting

Series ELC  
Type P1

ELCP1.12.25.14

### GENERAL DESCRIPTION

ELC converts an LED luminaire to emergency lighting operation, powered from a Sigtex central battery system. Constant power output is factory adjustable to optimize emergency illumination level and fixtures may be on, off, switched or dimmed in normal mode without affecting emergency operation. General lighting fixtures with ELC may be combined with MOONLITE LED™ emergency luminaires and exits in the central battery system, as required.

Typical applications for Type P1 may include down lights or other luminaires with limited space available, in normal power range from 10W to 70W.

All Sigtex central battery systems Series CBL and CBM include fully automatic self-test, self-diagnostics. Series CBM includes the MARS™ Monitoring and Reporting System which provides cloud-based internet communication and fault reports delivered automatically via email for all components of the emergency system.

### CONSTRUCTION & OPERATION

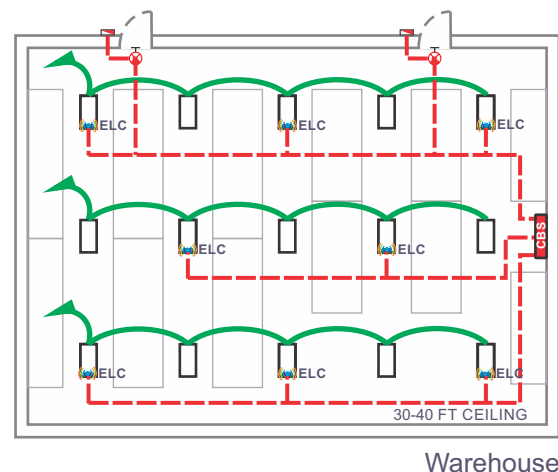
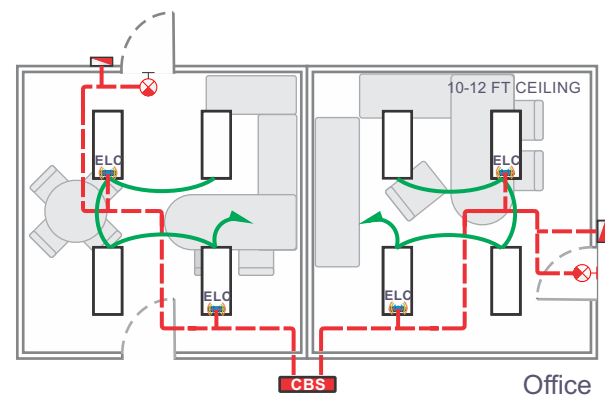
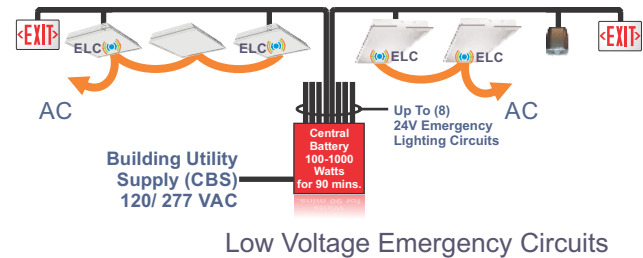
- Factory or field installable in the Fire and Electrical Enclosure of listed fixtures.
- Normal lighting operation is not affected by ELC operation.
- Compatible with all types of dimming and lighting controls.

### ELECTRICAL

- Input 24 VDC.
- Constant emergency power output is factory adjustable from 5W to 22W (see option V3).
- Output voltage auto sensing range up to 41V.
- Adjustable emergency lumen output allows optimum settings for any fixture to equal or exceed requirements of NEC and NFPA 101 codes for varying mounting heights and other conditions.
- Available for LED fixtures operating from 10W to 70W or higher in normal mode.
- Optional DC models available for compatible LED fixtures operating from 24VDC normal power.
- High Efficiency, 90% @ 24VDC input.
- OVP, SCP, OTP Protections.

### CODES

- UL Listed in compliance with UL Standard 924 and CAN/CSA C22.2 No. 141-15 for field or factory installation in Fire and Electrical Enclosure. All Sigtex Central Battery Systems and MOONLITE LED emergency fixtures are Listed to UL Standard 924.



### FIXTURE SCHEDULE

MODEL	CATALOG NO
APPROVAL	JOB INFORMATION



## SUGGESTED SPECIFICATIONS:

Supply and install Signtex Emergency Lighting Control Series ELC which shall be capable of operating a LED general lighting fixture in emergency mode for a minimum of 90 minutes following failure of the normal power supply to the fixture, when connected to a Signtex DC Central Battery System.

## ELECTRICAL SPECIFICATIONS

Driver current is settable at the factory, to produce the output voltage and power ranges given below in Table 1.

Emergency power output (EPR) is adjustable through the range given below. Power should be specified to ensure illumination on the path of egress complies with NFPA Life Safety Code101, based on photometric data and efficacy for the fixture in use. To determine compatibility of ELC devices and output power required for specific applications, See ELC SPECIFICATION GUIDE.

## PRODUCT DATA

### INPUT DATA:

Operating Voltage: **19~27V**  
Under Voltage Protect Turn OFF: **18V**  
Under Voltage Recover: **20V**  
DC Current (24V INPUT): **900mA**

### OUTPUT DATA:

CONSTANT CURRENT OUTPUT

**TABLE 1: OUTPUT VOLTAGE & CURRENT**

OPTION CODE	OUTPUT VOLTAGE <sup>1</sup> (VDC)	OUTPUT CURRENT <sup>2</sup> (mA)	MAX. OUTPUT POWER <sup>3</sup> (W)
NONE	5-41	50-350	14
V3	5-22	300-1000	22

1. Automatic Output Voltage sensing

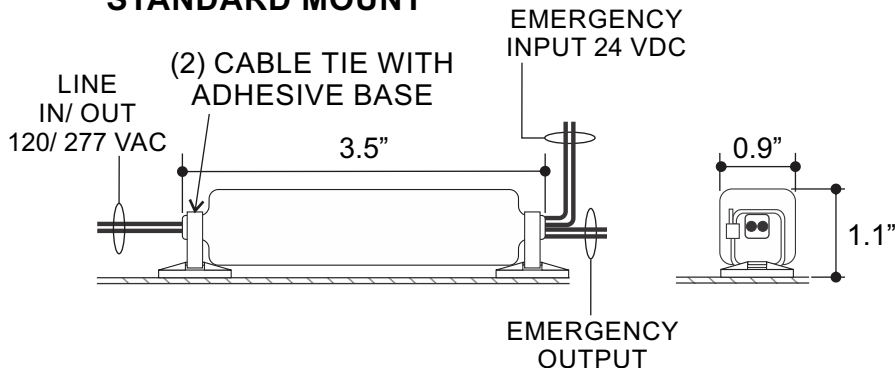
2. Output Current is factory adjustable.

3. See ELC SPECIFICATION GUIDE to estimate value required

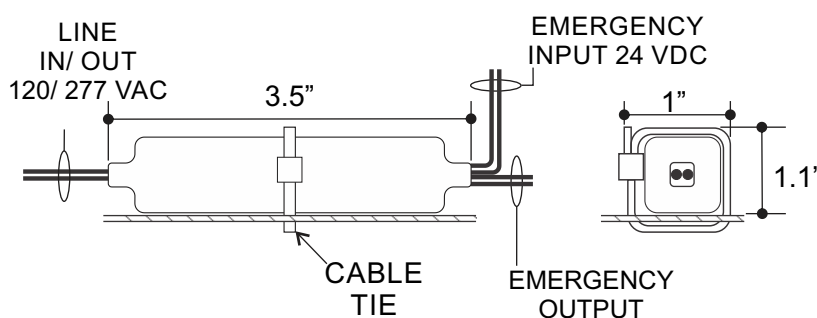
### NOTE:

- All specifications measured at 25°C.
- If LED arrays include current regulation circuits, contact factory to confirm ELC is compatible.

### STANDARD MOUNT



### THROUGH BASE SINGLE TIE



### OPERATING TEMPERATURE:

Max Ambient Temperature (Ta) 65°C

Max Case Temperature (Tc) 80°C

## ORDERING INFORMATION: Example: ELC10P1-V3

ELC	10	P1	-V3
MODEL SERIES	EMERGENCY POWER WATTS	PACKAGE TYPE	OPTIONS
ELC	X Watts <sup>1</sup>	P1	V3 = 5-22V

<sup>1</sup> Based on lumen output required

### UL Conditions of Acceptability:

Wiring must be installed within a Fire and Electrical Enclosure and light output must exceed 1 ft Candle at 7' 3" from sample.



**Signtex Inc**  
**LIGHTING**

220 VFW Avenue, Grasonville, MD 21638  
TEL: (410) 827-8300 Fax: (410) 827-8866  
sales@signtexinc.com www.signtexinc.com

DISTRIBUTOR: