

Emergency Lighting Control For Use With Signtex DC Central Battery Systems

Series ELC
Package Type P6

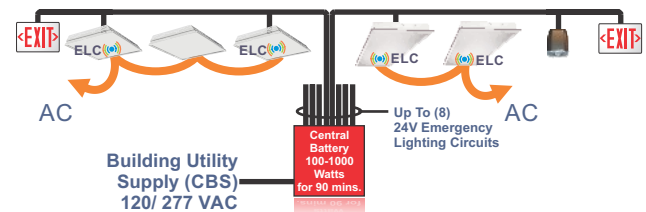
ELCP6.12.25.06

GENERAL DESCRIPTION

ELC converts any LED luminaire operating from normal AC or 24VDC power, to emergency lighting operation powered from a Signtex central battery system. Constant power output is factory adjustable to optimize emergency illumination level and fixtures may be on, off, switched or dimmed in normal mode without affecting emergency operation. General lighting fixtures with ELC may be combined with MOONLITE LED™ emergency luminaires and exits in the central battery system, as required.

Typical applications for Type P6 may include Down Lights, 2 x 2 or 2 x 4 LED flat panel or other lay-in designs, with normal power ranging from 10W to 70 watts or more.

All Signtex central battery systems Series CBL and CBM include fully automatic self-test, self-diagnostics. Series CBM includes the MARS™ Monitoring and Reporting System which provides cloud-based internet communication and fault reports delivered automatically via email for all components of the emergency system.



Low Voltage Emergency Circuits

CONSTRUCTION & OPERATION

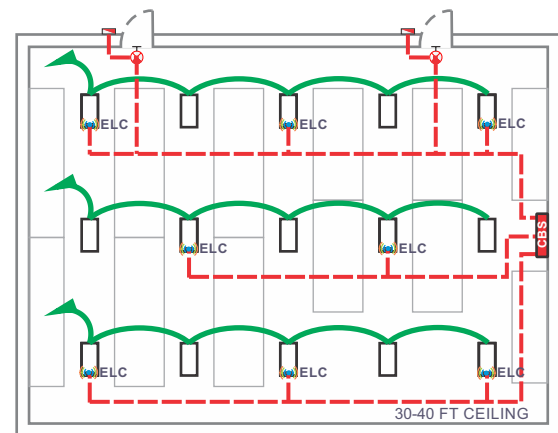
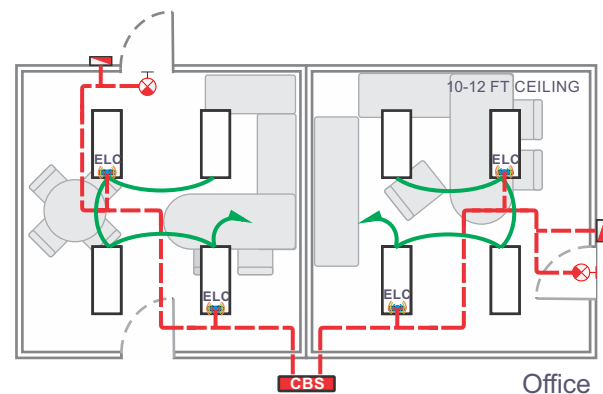
- Plenum rated Glass fiber enclosure.
- External mount, factory or field installable on junction box.
- Normal lighting operation is not affected by ELC operation.
- Compatible with all types of dimming and lighting controls.

ELECTRICAL

- Input 24 VDC.
- Constant emergency power output is factory adjustable from 5W to 20W .
- Output voltage auto sensing range up to 54V.
- Adjustable emergency lumen output allows optimum settings for any fixture to equal or exceed requirements of NEC and NFPA 101 codes for varying mounting heights and other conditions.
- Available for LED fixtures operating from 10W to 70W or higher in normal mode.
- Optional DC models available for compatible LED fixtures operating from 24VDC normal power.
- High Efficiency, 90%@24VDC input.
- OVP, SCP, OTP Protections.

CODES

- UL Listed in compliance with UL Standard 924 and CAN/ CSA C22.2 No. 141-15 for field or factory installation in Fire and Electrical Enclosure. All Signtex Central Battery Systems and MOONLITE LED emergency fixtures are Listed to UL Standard 924.



Warehouse

— EMERGENCY LIGHTING CIRCUIT: LOW VOLTAGE 24 VDC
— NORMAL LIGHTING BRANCH CIRCUIT 120/ 277 VAC

FIXTURE SCHEDULE

MODEL	CATALOG NO
APPROVAL	JOB INFORMATION



Emergency Lighting Control For Use With Sigtex DC Central Battery Systems

Series ELC Package Type P6

ELCP6.12.25.06

SUGGESTED SPECIFICATIONS:

Supply and install Sigtex Emergency Lighting Control Series ELC which shall be capable of operating a LED general lighting fixture in emergency mode for a minimum of 90 minutes following failure of the normal power supply to the fixture, when connected to a Sigtex DC Central Battery System.

ELECTRICAL SPECIFICATIONS

Driver current is settable at the factory, to produce the output voltage and power ranges given below in Table 1.

Emergency power output (EPR) is adjustable through the range given below. Power should be specified to ensure illumination on the path of egress complies with NFPA Life Safety Code101, based on photometric data and efficacy for the fixture in use. To determine compatibility of ELC devices and output power required for specific applications, See ELC SPECIFICATION GUIDE.

PRODUCT DATA

INPUT DATA:

Operating Voltage: **19~27V**
Under Voltage Protect Turn OFF: **18V**
Under Voltage Recover: **20V**
Over Voltage Protect Turn OFF: **30V**
Over Voltage Recover: **28V**
DC Current (24V INPUT): **1A**
Inrush current : **2A** (COLD START, VIN=24V, 20W)

OUTPUT DATA:

CONSTANT CURRENT OUTPUT

TABLE 1: OUTPUT VOLTAGE & CURRENT

OPTION CODE	OUTPUT VOLTAGE ¹ (VDC)	OUTPUT CURRENT ² (mA)	MAX. OUTPUT POWER ³ (W)
NONE	12-54	40-275	15
V1	27-54	100-400	20
V2	5-41	50-350	14
V3	5-22	300-1000	22

1. Automatic Output Voltage sensing

2. Output Current is factory adjustable.

3. See ELC SPECIFICATION GUIDE to estimate value required

OPERATING TEMPERATURE:

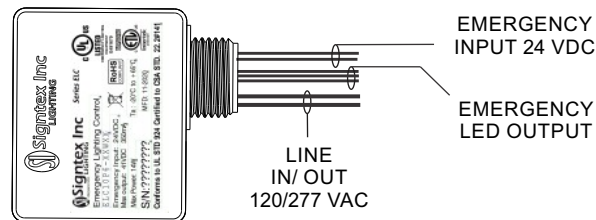
Max Ambient Temperature (Ta) 65°C

Max Case Temperature (Tc) 80°C

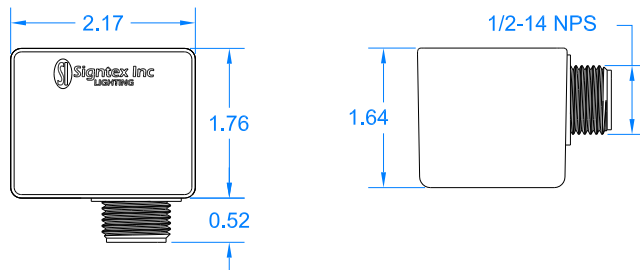
NOTE:

- All specifications measured at 25°C.
- If LED arrays include current regulation circuits, contact factory to confirm ELC is compatible.

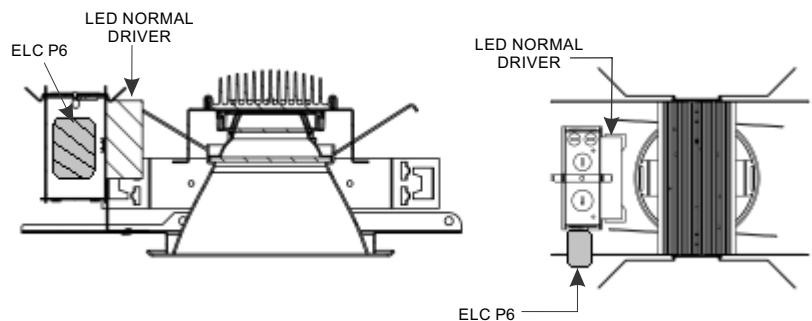
STANDARD MOUNT : VOLUME 7.0 CU INCH



DIMENSIONS:



TYPICAL J-BOX MOUNT



ORDERING INFORMATION: Example: ELC10P6-V1

ELC	10	P6	-V2
MODEL SERIES	EMERGENCY POWER WATTS	PACKAGE TYPE	OPTIONS
ELC	X Watts ¹	P6	V1 = 27- 54V V2 = 5- 41V V3 = 5- 22V

¹ Based on lumen output required

DISTRIBUTOR: