

Installation Instructions & Users Manual

Recess Mount

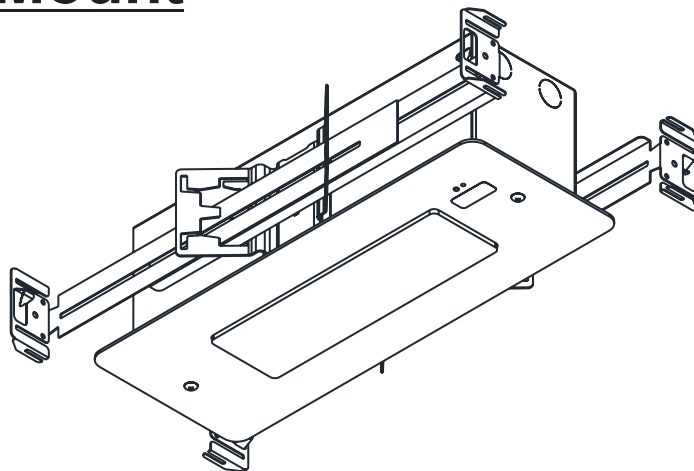
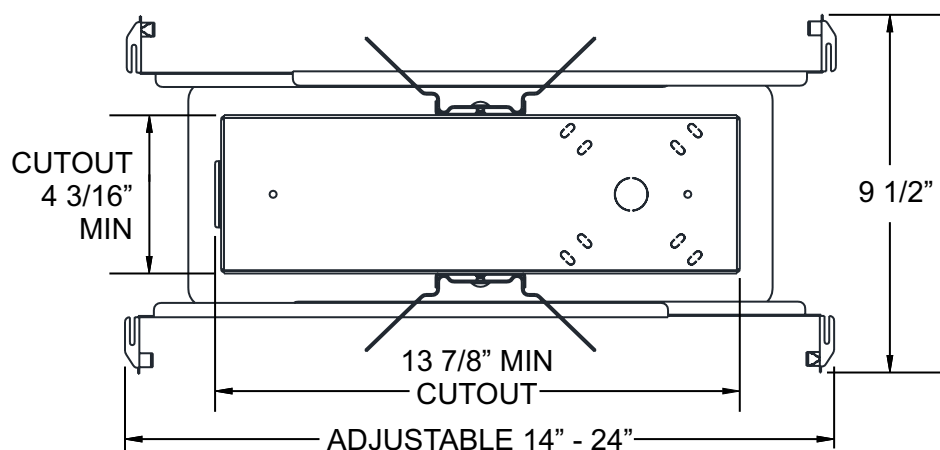


Fig 1

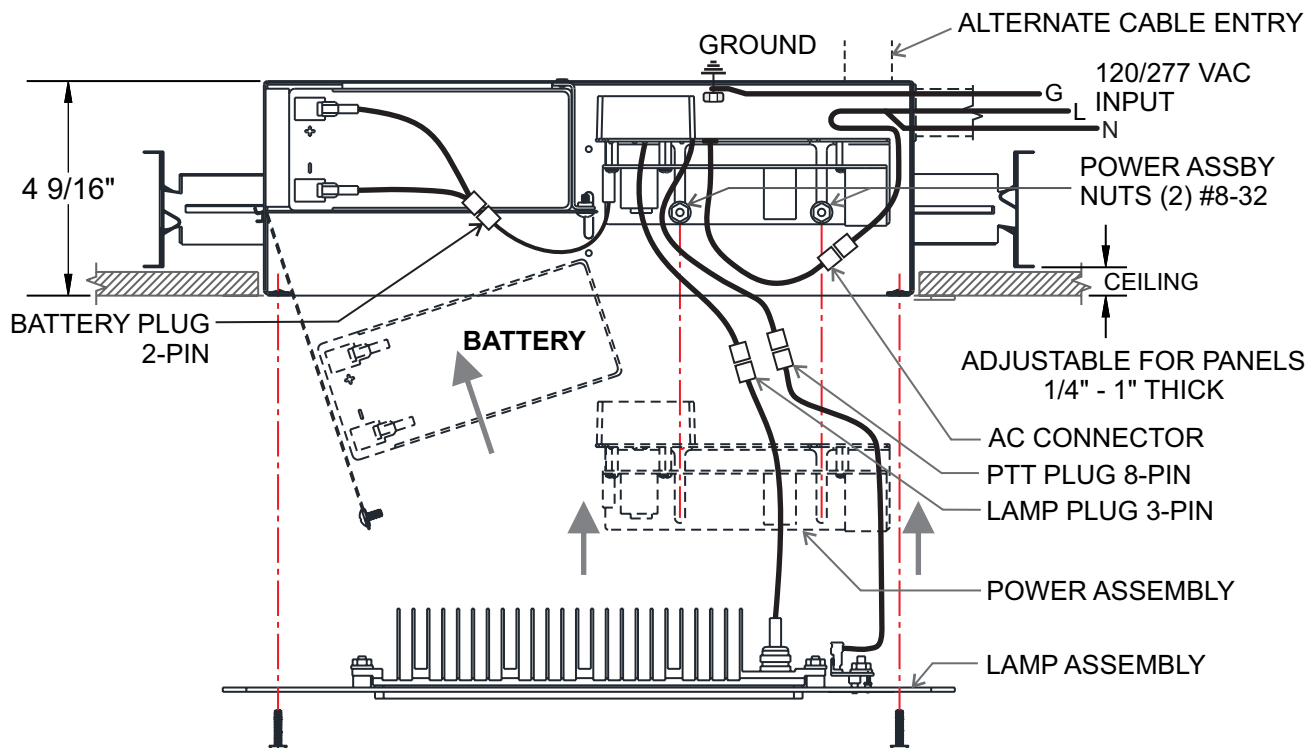


1. See Fig 1. Remove (2) #8 Trim Plate screws to remove Lamp Assembly and set aside. Loosen (2) #8 Power Assembly nuts on inside of housing, slide out Power Assembly from Back Box and set aside. Assemble adjustable hangars into wing brackets as shown. NOTE: Back Box can be mounted with or without battery in place. To reduce weight, do not install battery. To install, see WIRE CONNECTIONS & FINAL ASSEMBLY Pg ..

IMPORTANT SAFEGUARDS READ AND FOLLOW ALL SAFETY INSTRUCTIONS

1. Disconnect AC power before servicing.
2. Refer to wiring diagram for proper connections.
3. All servicing should be performed by qualified personnel.
4. Consult your local building code for approved wiring and installation.
5. Do not use outdoors.
6. Do not use this equipment for other than intended use.
7. Do not let power cords touch hot surfaces.
8. Mount and secure the fixture at a location and height to avoid ready access and tampering by unauthorized persons.
9. The use of accessory equipment is not recommended by the manufacturer and may cause an unsafe condition.

Fig 2



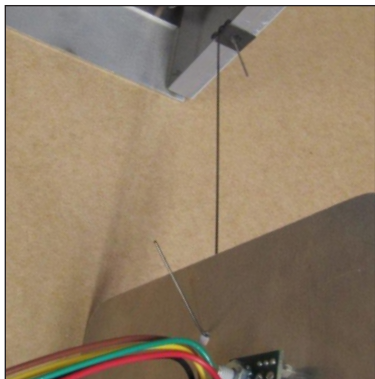
2. See Fig 2. Position Back Box assembly so that edge of box is flush or just below finished ceiling surface. NOTE: Fixture weight is 13 lb. Install drop wires when fixture is mounted on T-Bar grids in drop ceilings.

3. Route AC supply wiring into back box through KO's on top or sides of housing as shown. Connect GROUND wire to #8 stud inside housing then trim BLACK and WHITE input/output wires to approx. 8" inside housing.

4. Remove male half of AC lamp connector from BLACK/WHITE leads on power supply assembly. Strip AC input supply wires and push-connect BLACK (LINE) and WHITE (NEUTRAL) IN-OUT wires into lamp connector.

Wire Connections & Final Assembly

①



Note orientation of Lamp Assembly and attach to housing using hanging wire supplied.

②



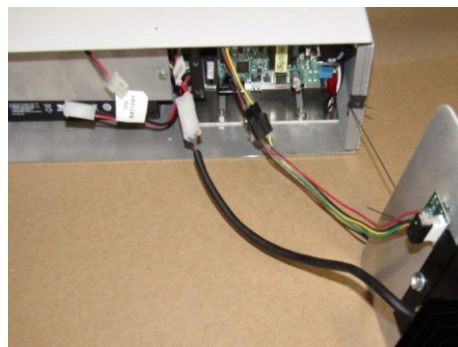
Rotate clamp into position and tighten #8 clamp screw. Make sure battery connector is free of clamp.

③



Mate AC supply plug and push plug into space next to PCB as shown.

④



Connect LAMP and PTT PLUGS as shown. BEFORE CONNECTING BATT PLUG CONFIRM AC SUPPLY IS ON. IF NOT ON, HIGH OUTPUT LAMP WILL LIGHT. When AC supply is ON, connect BATTERY PLUG.

⑤



Push BATTERY PLUG into cavity at side of battery

⑥



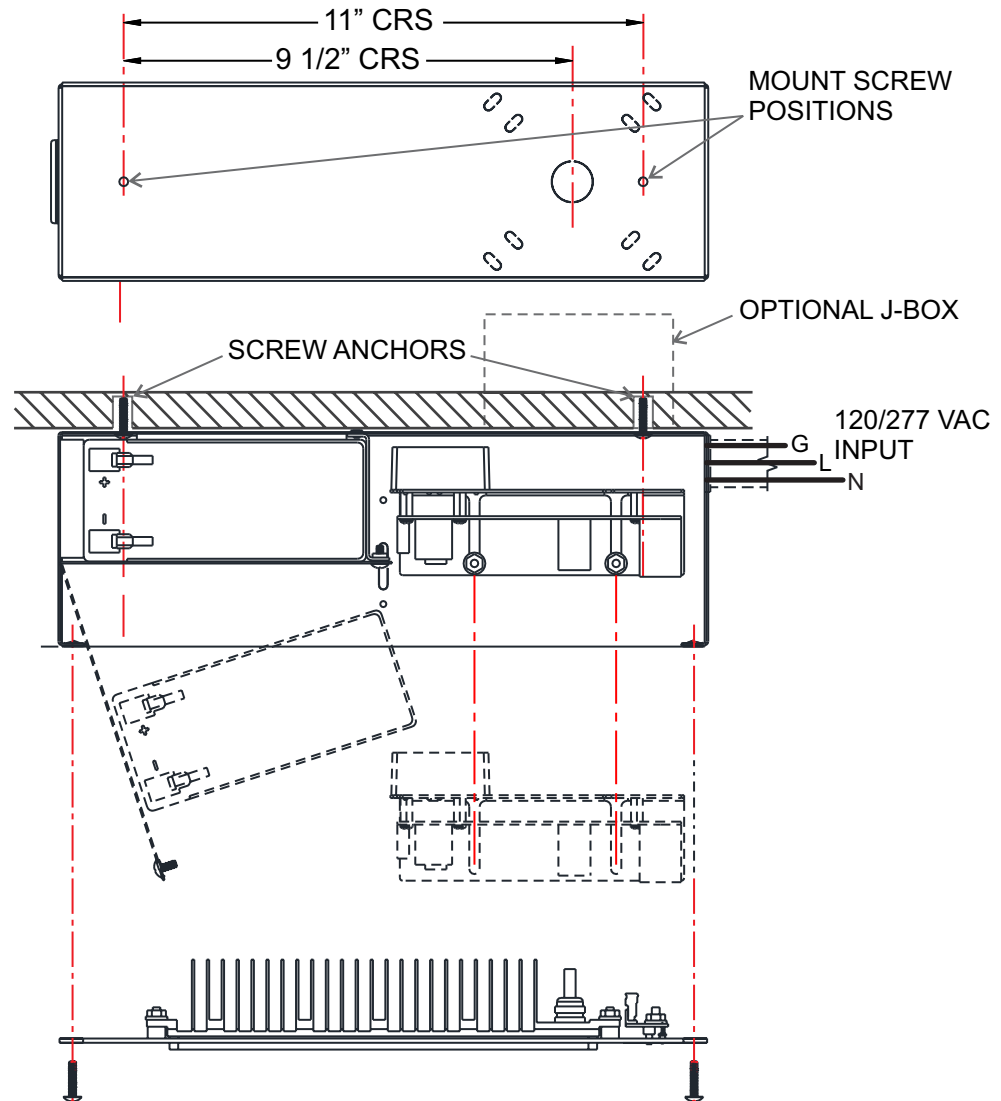
Remove Hanging Wire and place Lamp Assembly into position. Confirm that PTT and LAMP wiring plugs remain clear of Lamp Assembly in cavity above circuit Board. Insert (2) Trim Plate screws and tighten.

5. With AC power ON and battery connected, confirm that LED STATUS INDICATOR is illuminated GREEN. Press the PUSH TO TEST switch button, lamp will illuminate as long as the button is held down.

Full battery charge requires 24 hrs with AC power connected.

Surface Mount

Fig 3



1. See Fig 3. **NOTE: Fixture weight is 13 lb.** and screw anchors of suitable capacity must be used in ceilings. If using J-Box ensure that box is firmly secured in recess. If not using J-Box install (2) Screw Anchors for #10 mount screws supplied, at 11" between centers. If using J-Box, install at 9 1/2" between centers.

2. Proceed as for Surface Mount, from Step 3 to END.

SELF- TEST DIAGNOSTICS

Turn AC power ON. The LED status indicator will illuminate and should initially illuminate steady AMBER (high charge rate). Upon reaching full charge, the indicator will change to steady GREEN (low charge rate). The LED Status Indicator will show the following:

TEST FUNCTIONS

Battery
Transfer Switch
Charger Status
Connected Load Status
30 Day Test
Annual Test

NORMAL or PASS

GREEN OR AMBER
No indication
No indication
No indication
No indication
RED-GREEN Alternating

FAULT

RED- RED- PAUSE
ORANGE FLASH
RED FLASH
GREEN FLASH
Indication as above for specific fault
Indication as above for specific fault

CHARGE RATE

Float Charge
Bulk Charge

STEADY GREEN
STEADY ORANGE

The Emergency Fixture will automatically perform the following system tests:

MONTHLY TEST: 30 SECONDS LAMP OPERATION

Battery Condition

Transfer Switch Operation

Battery Charge Rate

Connected Load Continuity

ANNUAL TEST: 90 MINUTES LAMP OPERATION

12 months from the date of installation, an annual test is required by initiating full operation of the emergency load for 90 minutes, in compliance with NFPA Life Safety Code 101.

(1) **Standard System:** Periodic diagnostic tests will start at the same time the system was first activated with AC power.

NOTE: To avoid operation of emergency lighting at potentially undesirable times, automatic operation can be disabled by specification of Option "NAT", as designated in the Model Number Label. If such option is supplied, the annual test must be activated manually.

TESTING EMERGENCY OPERATION

Press the PUSH TO TEST button to operate fixture in emergency mode as long as the button remains depressed, or 30 seconds operation when button is released. Lamp can be checked visually during this period. Alternatively; (a) AC power to the fixture may be interrupted by qualified personnel.

FAILURE MODES & CORRECTIVE ACTIONS

30 day Test or Annual Test FAIL:

Indicates that one or more of the four (4) TEST FUNCTIONS failed during the test.

1) Battery State Alarm (FLASHING RED-RED -PAUSE):

The Battery terminal voltage has dropped below 10.5V in less than 90 minutes since loss of AC line power, OR is below 10.5V at any time in normal operation.

CORRECTIVE ACTION: Replace Battery.

NOTE: (1) To avoid unnecessary replacement, make sure the battery Plug is connected to the board and it has completed his full charging cycle. (8 hours min)

2) Transfer Switch Alarm (FLASHING ORANGE):

Failure to transfer connected load to battery power when AC line power fails.

CORRECTIVE ACTION: To confirm the fault code is correct, reset the fixture by depressing PUSH TO TEST for approximately 5 seconds. If the lamp is ON and error returns, the circuit board must be replaced.

3) Charger State Alarm (FLASHING RED):

Battery charge current has fallen below a threshold value.
CORRECTIVE ACTION: To confirm the fault code is correct, reset the fixture by depressing PUSH TO TEST for approximately 5 seconds. If the error returns, the circuit board must be replaced.

4) Connected LAMP Alarm (GREEN FLASH):

25% or more LEDs on the Lamp has failed.

CORRECTIVE ACTION: To confirm the fault code is correct, reset the fixture by depressing PUSH TO TEST for approximately 5 seconds. If the lamp is OFF and error returns, the Lamp must be replaced.