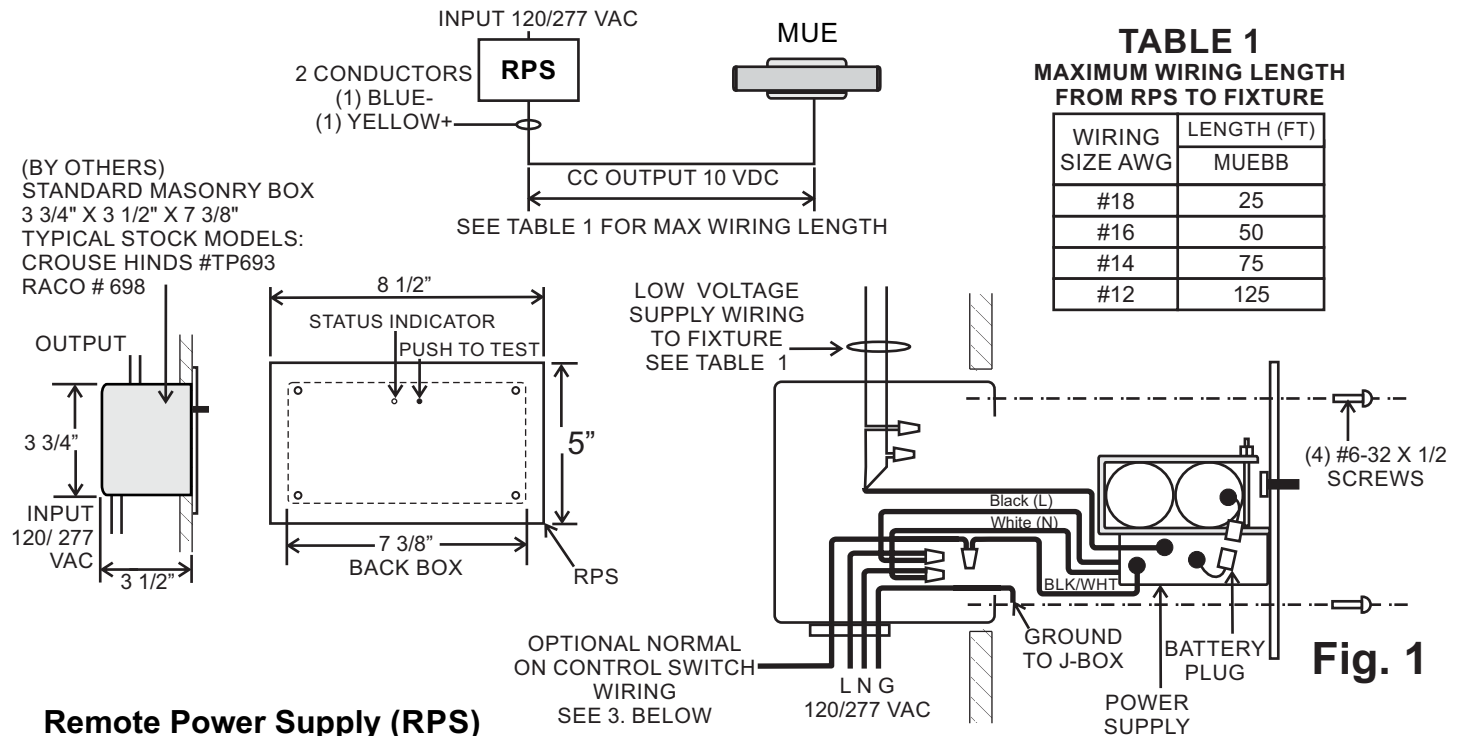


INSTALLATION INSTRUCTIONS AND OWNER'S MANUAL

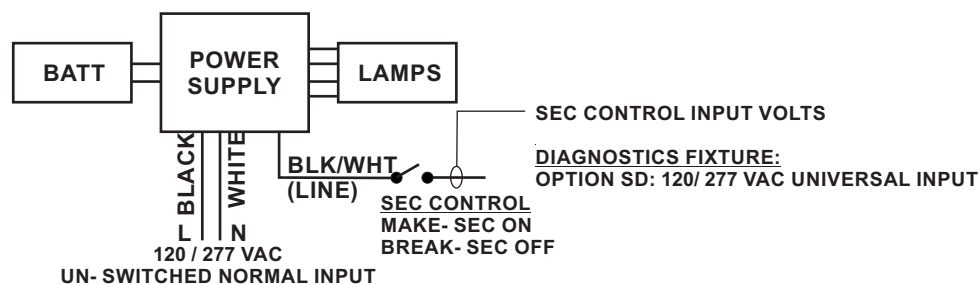


Remote Power Supply (RPS)

1. See Fig. 1. Place power supply assembly inside housing and note available knock-outs for wiring clearance. Remove suitable K.O.'s in areas with clearance for wiring and connectors. Use framing or brackets to install Masonry Box housing as shown, in a location convenient for access to battery and power supply. Align top edge flange flush with finished panel Surface. See Table 1 to estimate wire size required based on maximum wiring length for low voltage output wiring from RPS to the fixture.

2. **INPUT WIRING:** Connect BLACK(Line) and WHITE(Neutral) AC input wiring to building supply with wire nuts, and connect GROUND to Housing with Screw mount.

3. SECURITY LIGHTING SWITCH CONTROL (OPTION SD)



4. **OUTPUT LOW VOLTAGE WIRING:** See Table 1 for minimum wire size based on distance to fixture. Example using #20 AWG, max distance is 100 ft. See Pg. 2 for detail. Route conductors from the RPS to the fixture location.

5. Connect the BATTERY plug: NOTE If AC power is OFF, the fixture will turn ON under battery power. To minimize battery discharge, turn AC power ON after fixture is connected, or disconnect battery.

IMPORTANT SAFEGUARDS READ AND FOLLOW ALL SAFETY INSTRUCTIONS

1. Disconnect AC power before servicing.
2. Refer to wiring diagram for proper connections.
3. All servicing should be performed by qualified personnel.
4. Consult your local building code for approved wiring and installation.
5. Do not use this equipment for other than intended use.
6. Do not let power cords touch hot surfaces.
7. Mount and secure the fixture at a location and height to avoid ready access and tampering by unauthorized persons.
8. The use of accessory equipment is not recommended by the manufacturer and may cause an unsafe condition.
9. Suitable for wet locations. See product label for temperature limitations.

SAVE THESE INSTRUCTIONS

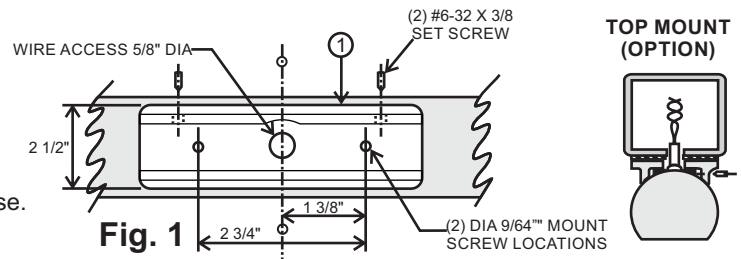
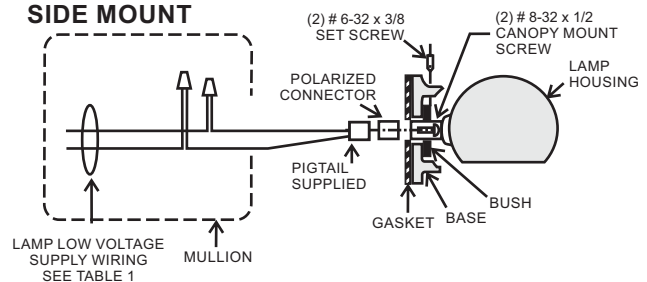
INSTALLATION INSTRUCTIONS AND OWNER'S MANUAL

Fixture Assembly

1. See Fig 1. Drill 5/8" dia wire access hole and (2) 9/64" dia (or suitable tapping size) mount screw holes in the mullion beam at center of selected fixture location.
2. Loosen (2) #6-32 set screws, release lamp housing from base.
3. Attach base to mullion with (2) #8 screws (not supplied). Tighten evenly on gasket.
4. Route low voltage supply wiring through mullion and attach lamp plug pigtail (supplied) to supply wiring with wire nuts.

MAINTAIN COLOR CODES AT CONNECTOR:**YELLOW = LED+****BLUE = LED-**

5. Attach polarized lamp plug on pigtail, insert wiring and lamp plug into mullion.
6. Secure lamp housing on the base with (2) set screws.
7. Turn AC power ON. Connect battery at the RPS, then press the PUSH TO TEST button to check operation. Full battery charge requires 24 hrs.

**SIDE MOUNT**

SUITABLE FOR WET LOCATIONS
 AMBIENT TEMPERATURE LIMITS:
 -0° C to +50° C

SELF-TEST DIAGNOSTICS

1. Install Emergency lighting according to the instructions on page 1-2. Once the AC power is supplied to fixture, the unit will automatically initiate a self-Test and self-diagnostic test as follows.

- Verifies battery disconnection, Charger failure, Load failure.
- One-minute self-testing (Battery discharging test) every month.
- 90 minutes self-testing (Battery discharging test) every year.

2. Dual color LED lamp shows the following status:

TEST FUNCTIONS	NORMAL or PASS	FAULT
Battery	GREEN OR AMBER	RED FLASH
Transfer Switch	No indication	ORANGE FLASH
Charger Status	No indication	RED FLASH
Connected Load Status	No indication	GREEN FLASH

CHARGE RATE

Normal Full Charge	STEADY GREEN
Normal Fast Charge	STEADY ORANGE

Self-test Diagnostic Functions (BB models)

STATUS	LED DISPLAY
Normal Full Charge	● GREEN ON
Normal Fast Charge	● ORANGE ON
Failed Battery	● RED FLASH FAST
Failed Lamp	● GREEN FLASH
Failed Transfer	● ORANGE FLASH
Failed Charger	● RED FLASH SLOW

The Emergency Fixture will automatically perform the following system tests:

MONTHLY TEST: 1 MINUTE LAMP OPERATION

Battery Condition Transfer Switch Operation Battery Charge Rate Connected Load Continuity

ANNUAL TEST: 90 MINUTES LAMP OPERATION

12 months from the date of installation, an annual test is required by initiating full operation of the emergency load for 90 minutes, in compliance with NFPA Life Safety Code 101.

(1) **Standard System:** Periodic diagnostic tests will start at the same time the system was first activated with AC power.

NOTE: To avoid operation of emergency lighting at potentially undesirable times, automatic operation can be disabled by specification of Option "NAT", as designated in the Model Number Label. If such option is supplied, the annual test must be activated manually.

TESTING EMERGENCY OPERATION

Press the PUSH TO TEST button (3 seconds) to operate fixture in emergency mode for one minute test. Lamp can be checked visually during this period. Alternatively; (a) AC power to the fixture may be interrupted by qualified personnel.

