

# Emergency Lighting Control

## For Use With Series CBS Central Battery System for Emergency Lighting

**Series ELC**  
**Type P03**

ELCP03.12.25.11

### GENERAL DESCRIPTION

ELC converts an LED luminaire to emergency lighting operation, powered from a Sigtex central battery system. Constant power output is factory adjustable to optimize emergency illumination level and fixtures may be on, off, switched or dimmed in normal mode without affecting emergency operation. General lighting fixtures with ELC may be combined with MOONLITE LED™ emergency luminaires and exits in the central battery system, as required.

Typical applications for Type P03 may include high-bay high power luminaires with normal power range from 30W to 300W or higher, and AC LED driver output up to 126V.

All Sigtex central battery systems Series CBL and CBM include fully automatic self-test, self-diagnostics. Series CBM includes the MARS™ Monitoring and Reporting System which provides cloud-based internet communication and fault reports delivered automatically via email for all components of the emergency system.

### CONSTRUCTION & OPERATION

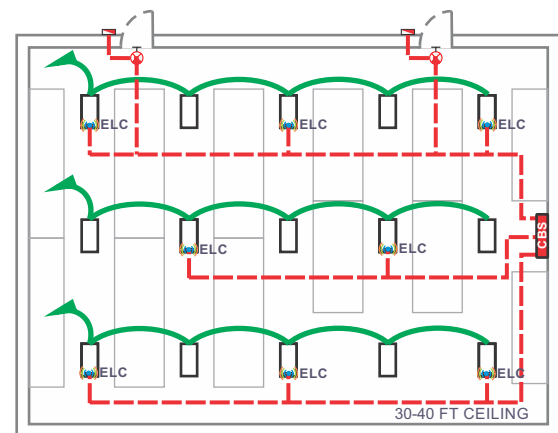
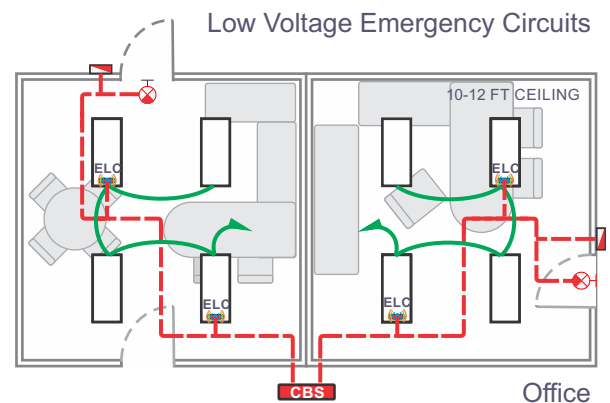
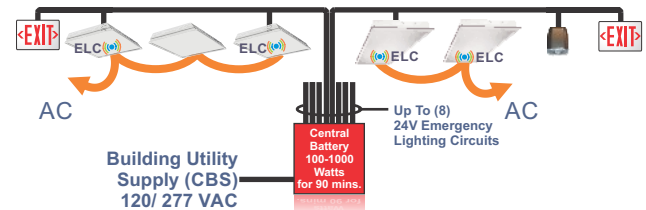
- Factory or field installable in the Fire and Electrical Enclosure of listed fixtures.
- Normal lighting operation is not affected by ELC operation.
- Compatible with all types of dimming and lighting controls.
- Standard mount= Hi temp VHB DF tape. Optional flange for screw mount.

### ELECTRICAL

- Input 24 VDC.
- Constant emergency power output is factory adjustable from 5W to 45W.
- Up to 4 Channel output for operation in luminaires with up to 4 drivers.
- Output voltage auto sensing range from 21V to 126V.
- Adjustable emergency lumen output allows optimum settings for any fixture to equal or exceed requirements of NEC and NFPA 101 codes for varying mounting heights and other conditions.
- Available for LED fixtures operating from 30W to 300W or higher in normal mode.

### CODES

- Recognized component in compliance with UL Standard 924 and CSA C22.2 No. 141 for field or factory installation in Fire and Electrical Enclosure. All Sigtex Central Battery Systems and MOONLITE LED emergency fixtures are UL Listed to Standard 924.



Warehouse



RECOGNIZED COMPONENT



Intertek  
2003529  
Conforms to UL 924  
Certified to CSA 22.2 #141

### FIXTURE SCHEDULE

MODEL	CATALOG NO
APPROVAL	JOB INFORMATION



# Emergency Lighting Control

## For Use With Series CBS Central Battery System for Emergency Lighting

**Series ELC**  
**Type P03**

ELCP03.12.25.11

### SUGGESTED SPECIFICATIONS:

Supply and install Sigtex Emergency Lighting Control Series ELC which shall be capable of operating a LED general lighting fixture in emergency mode for a minimum of 90 minutes following failure of the normal power supply to the fixture, when connected to a Sigtex DC Central Battery System.

### ELECTRICAL SPECIFICATIONS

Driver current is settable at the factory, to produce the output voltage and power ranges given below in Table 1.

Emergency power output (EPR) is adjustable through the range given below. Power should be specified to ensure illumination on the path of egress complies with NFPA Life Safety Code101, based on photometric data and efficacy for the fixture in use. To determine compatibility of ELC devices and output power required for specific applications, See ELC SPECIFICATION GUIDE.

### PRODUCT DATA

#### INPUT DATA:

Rated Voltage: **24VDC**  
Voltage Range: **18~32V**  
Under Voltage Protect Turn OFF: **18V**  
Under Voltage Recover: **20V**  
DC Current (24V INPUT): **2.1A MAX**

#### OUTPUT DATA:

CONSTANT CURRENT OUTPUT

TABLE 1: OUTPUT VOLTAGE & CURRENT

Option Code	Output Voltage (VDC) <sup>1</sup>	Output Current (mA) <sup>2</sup>	MAX. Output Power (W) <sup>3</sup>
None	27-43	100-1050	45
V1	27-64	100-700	45
V2	27-86	100-500	45
V3	27-126	100-350	45

1. Automatic Output Voltage sensing

2. Output Current is factory adjustable.

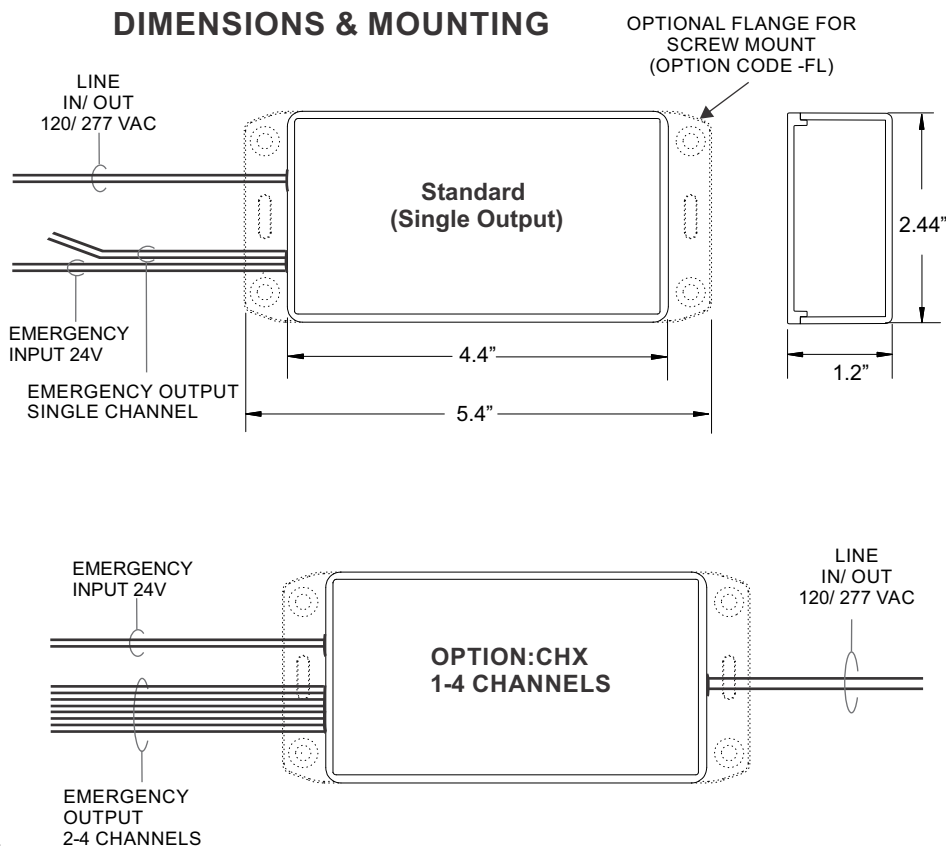
3. See ELC SPECIFICATION GUIDE to estimate value required

#### NOTE:

All specifications measured at 25°C.

If LED arrays include current regulation circuits, contact factory to confirm ELC is compatible.

### DIMENSIONS & MOUNTING



**Operating Temperature:** -40° to +65° C  
Max Ambient Temperature (Ta) 65° C  
Max Case Temperature (Tc) 85° C

#### UL Conditions of Acceptability:

Wiring must be installed within a Fire and Electrical Enclosure and light output must exceed 1 ft Candle at 7' 3" from sample.

### ORDERING INFORMATION: Example: ELC30P03-CH2

ELC	30	P03	-CH2
MODEL SERIES	EMERGENCY POWER WATTS	PACKAGE TYPE	OPTIONS
ELC	X Watts <sup>1</sup>	P03	V1 = 27-64 V2 = 27-86 V3 = 27-126 CHX = X Channels <sup>2</sup> FL= Flange Screw Mount

<sup>1</sup> Based on lumen output required

<sup>2</sup> X= Number of normal drivers installed



**Sigtex Inc**  
LIGHTING

220 VFW Avenue, Grasonville, MD 21638  
TEL: (410) 827-8300 Fax: (410) 827-8866  
sales@sigtexinc.com www.sigtexinc.com

DISTRIBUTOR: