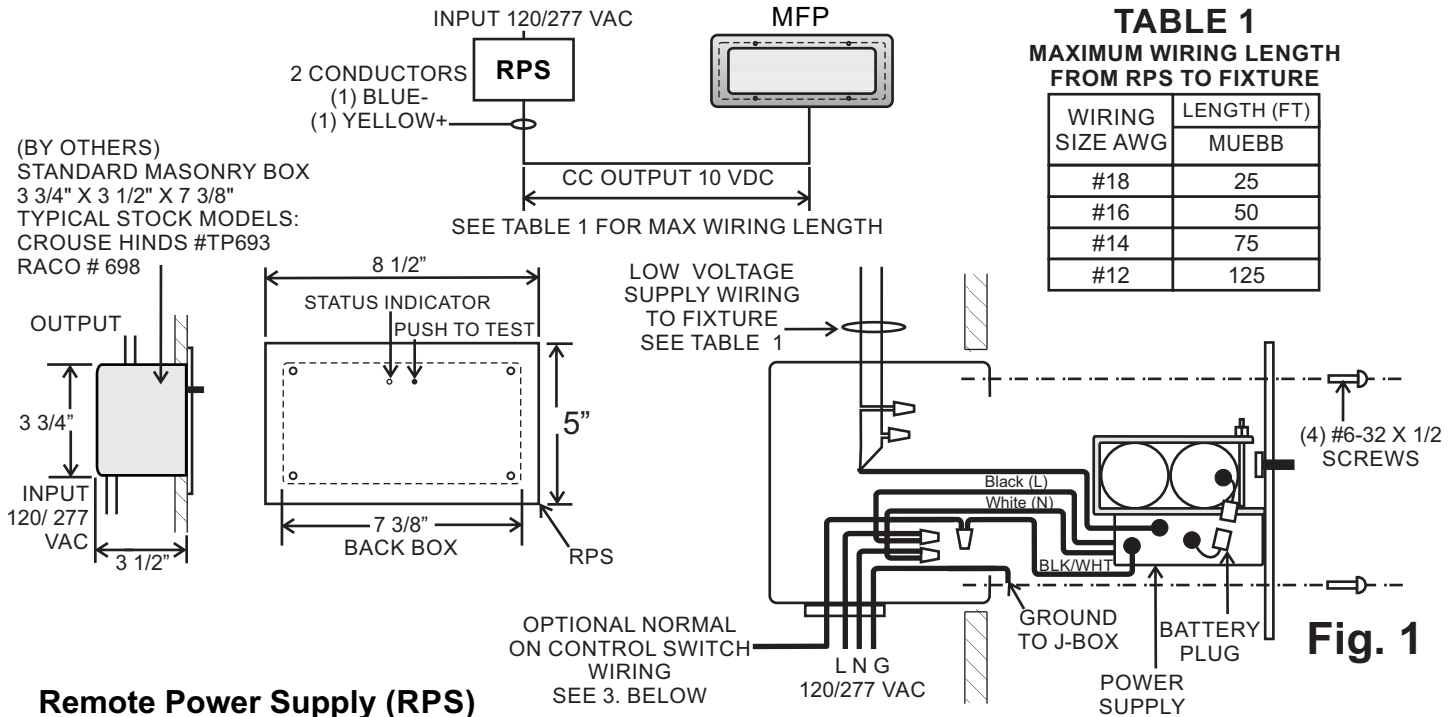


INSTALLATION INSTRUCTIONS AND OWNER'S MANUAL

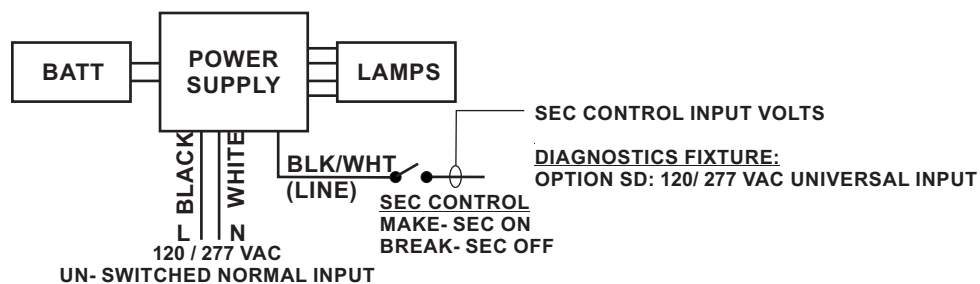


Remote Power Supply (RPS)

1. See Fig. 1. Place power supply assembly inside housing and note available knock-outs for wiring clearance. Remove suitable K.O's in areas with clearance for wiring and connectors. Use framing or brackets to install Masonry Box housing as shown, in a location convenient for access to battery and power supply. Align top edge flange flush with finished panel Surface. See Table 1 to estimate wire size required based on maximum wiring length for low voltage output wiring from RPS to the fixture.

2. **INPUT WIRING:** Connect BLACK(Line) and WHITE(Neutral) AC input wiring to building supply with wire nuts, and connect GROUND to Housing with Screw mount.

3. **SECURITY LIGHTING SWITCH CONTROL (OPTION SD)**



4. **OUTPUT LOW VOLTAGE WIRING:** See Table 1 for minimum wire size based on distance to fixture. Example using #20 AWG, max distance is 100 ft. See Pg. 2 for detail. Route conductors from the RPS to the fixture location.

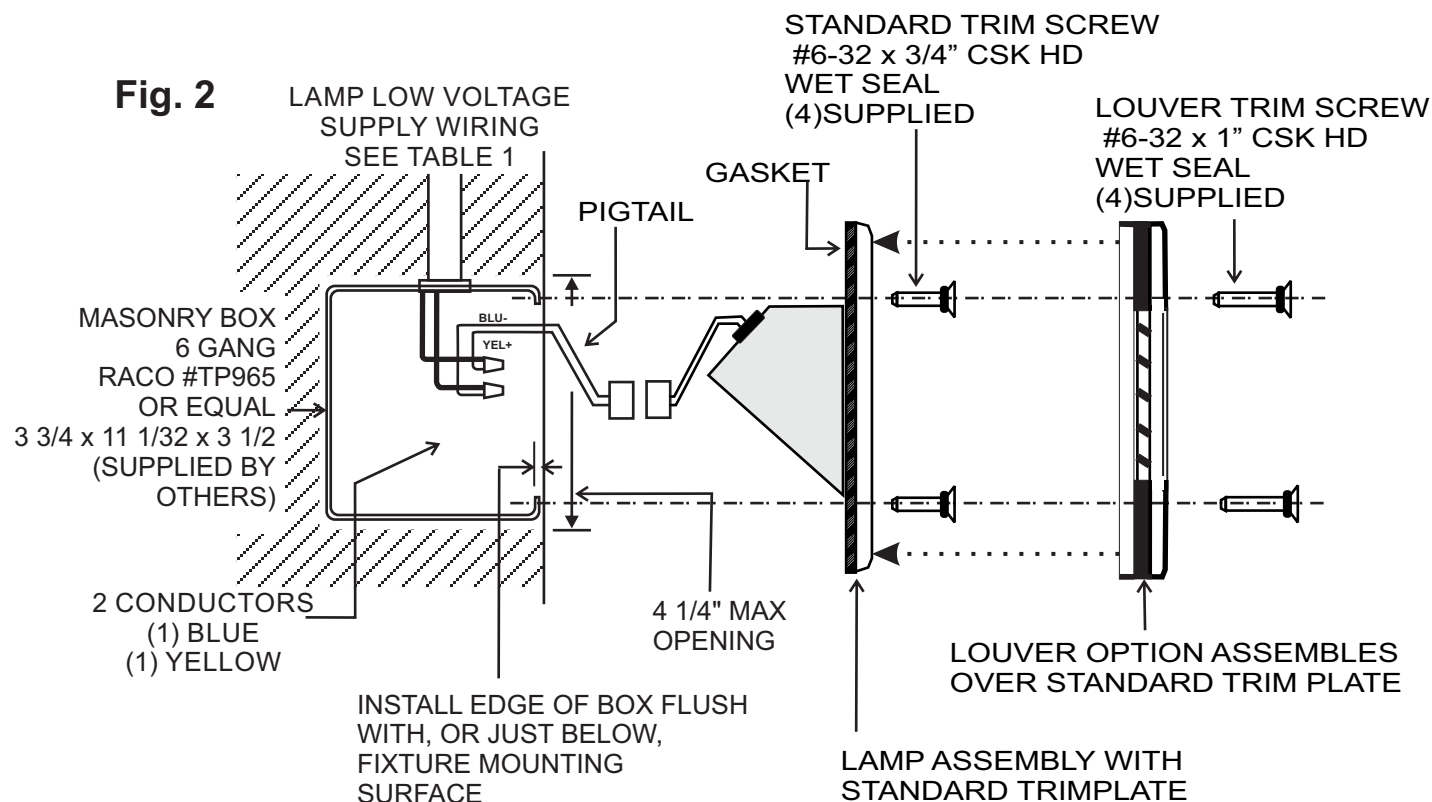
5. Connect the BATTERY plug: NOTE If AC power is OFF, the fixture will turn ON under battery power. To minimize battery discharge, turn AC power ON after fixture is connected, or disconnect battery.

IMPORTANT SAFEGUARDS READ AND FOLLOW ALL SAFETY INSTRUCTIONS

1. Disconnect AC power before servicing.
2. Refer to wiring diagram for proper connections.
3. All servicing should be performed by qualified personnel.
4. Consult your local building code for approved wiring and installation.
5. Do not use this equipment for other than intended use.
6. Do not let power cords touch hot surfaces.
7. Mount and secure the fixture at a location and height to avoid ready access and tampering by unauthorized persons.
8. The use of accessory equipment is not recommended by the manufacturer and may cause an unsafe condition.
9. Suitable for wet locations. See product label for temperature limitations.

SAVE THESE INSTRUCTIONS

INSTALLATION INSTRUCTIONS AND OWNER'S MANUAL



Fixture Assembly

1. See Fig.2 Route low voltage supply wiring into 6-Gang Junction Box enclosure as shown. Firmly secure j-box within cavity by framing, cement fill or brackets to studs as required.
Ensure that the outer flange surfaces are parallel to and flush or just below the exterior mount surface.
2. Place lower voltage wiring in lower area of j-box and attach lamp plug connector pigtail (supplied) with wire nuts.
MAINTAIN COLOR CODES AT CONNECTOR
2 CONDUCTORS (1) BLUE and (1) YELLOW

BLUE: LED - (Negative)
YELLOW: LED+ (Positive)
3. Connect polarized Lamp Plug on Lamp Housing Assembly and insert Assembly into the enclosure. Place Assembly in position and ensure the gasket contacts all surfaces around the Faceplate, with no visible holes or cavities.
4. Insert (4) #6-32 stainless wet-seal screws supplied. **Tighten evenly all around faceplate. Do not over tighten screws.**
5. Turn AC power ON. Connect battery at the RPS, then press the PUSH TO TEST button to check operation. Full battery charge requires 24 hrs.