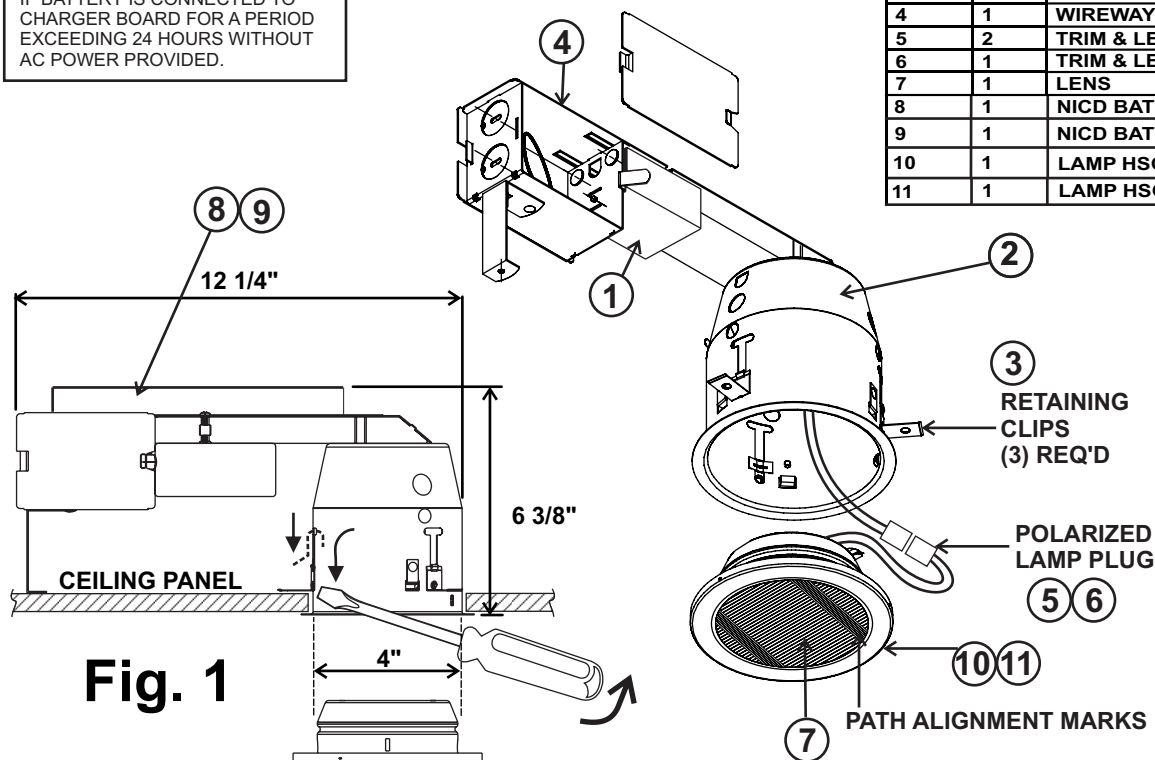


INSTALLATION INSTRUCTIONS AND OWNER'S MANUAL

REV 01.25.03

CAUTION:
DAMAGE TO BATTERY MAY OCCUR
IF BATTERY IS CONNECTED TO
CHARGER BOARD FOR A PERIOD
EXCEEDING 24 HOURS WITHOUT
AC POWER PROVIDED.

ITEM	QTY	DESCRIPTION
1	1	POWER CONVERTER ASSBY
2	1	HOUSING
3	3	RETAINING CLIP
4	1	WIREWAY OUTLET BOX ASSBY
5	2	TRIM & LED 2- LAMP ASSBY
6	1	TRIM & LED 3- LAMP ASSBY
7	1	LENS
8	1	NICD BATT. ASSBY. 3.6V
9	1	NICD BATT. ASSBY. 4.8V
10	1	LAMP HSG. ASSBY. BB2L
11	1	LAMP HSG. ASSBY. BB3L



1. Locate fixture position and drill 4" clearance hole in ceiling tile. See SPACING GUIDE for 1 Foot Candle average illuminance.
2. Route 120 VAC wiring through ceiling hole. Run supply wiring to outlet box and make connection from AC building supply.
BLACK: 120/277 VAC. **WHITE:** NEUTRAL. **GREEN:** GROUND.
3. If retaining clips are assembled to housing, remove and set aside. Insert fixture assembly through ceiling hole.
4. See Fig. 1. From inside housing, insert the three retaining clips into slots in housing. Use flat blade screwdriver to slide clips down until in contact with top of ceiling panel.
5. Connect polarized lamp plug and insert lamp assembly into housing and snap into place. ROTATE LAMP ASSEMBLY TO LINE UP MARKERS ON LENS WITH PATH OF EGRESS. NOTE - LAMPS WILL TURN ON UNTIL AC POWER IS APPLIED.
6. Apply AC power and check lamps turn OFF. Operate PUSH TO TEST for lamp operation.
NOTES (1): LAMPS WILL ILLUMINATE ON BATTERY POWER IF AC SUPPLY IS OFF. TO LIMIT BATTERY DISCHARGE, TURN AC POWER ON.
(2) LAMP ASSEMBLY MUST BE CORRECTLY ORIENTED WITH RESPECT TO PATH OF EGRESS. ROTATE LAMP ASSEMBLY SO THAT ALIGNMENT MARKS ARE IN LINE WITH THE PATH OF EGRESS.
6. Apply AC power and check test switch operation

IMPORTANT SAFEGUARDS READ AND FOLLOW ALL SAFETY INSTRUCTIONS

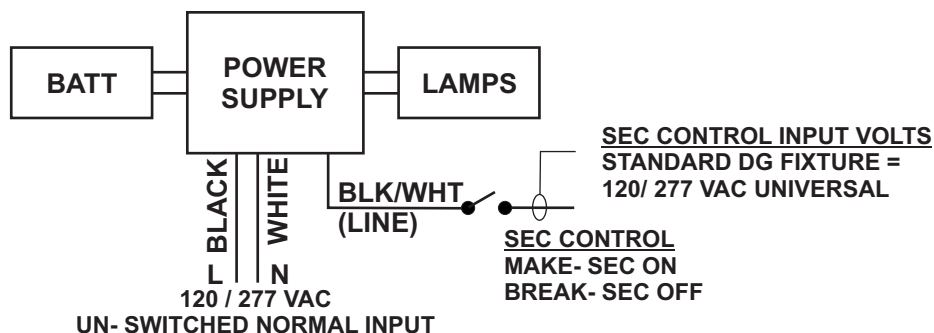
1. Disconnect AC power before servicing.
2. Refer to wiring diagram for proper connections.
3. All servicing should be performed by qualified personnel.
4. Consult your local building code for approved wiring and installation.
5. Do not use outdoors.
6. Do not use this equipment for other than intended use.
7. Do not let power cords touch hot surfaces.
8. Mount and secure the fixture at a location and height to avoid ready access and tampering by unauthorized persons.
9. The use of accessory equipment is not recommended by the manufacturer and may cause an unsafe condition.

SAVE THESE INSTRUCTIONS

INSTALLATION INSTRUCTIONS AND OWNER'S MANUAL

REV 01.25.03

SECURITY LIGHTING SWITCH CONTROL OPTION



SELF- TEST DIAGNOSTICS

1. Install Emergency lighting according to the instructions on page 1-3.
2. Once the AC power is supplied to fixture, the unit will automatically initiate a self-Test and self-diagnostic test as follows.
 - Verifies battery disconnection, Charger failure, Load failure.
 - One-minute self-testing(Battery discharging test) every month.
 - 90 minutes self-testing (Battery discharging test) every year.

Self-test Diagnostic Functions
(BB models)

STATUS	LED DISPLAY
Normal Full Charge	● GREEN ON
Normal Fast Charge	● ORANGE ON
Failed Battery	● RED FLASH FAST
Failed Lamp	● GREEN FLASH
Failed Transfer	● ORANGE FLASH
Failed Charger	● RED FLASH SLOW

3. Dual color LED lamp shows the following status:

TEST FUNCTIONS

Battery
Transfer Switch
Charger Status
Connected Load Status

NORMAL or PASS

GREEN OR AMBER
No indication
No indication
No indication

FAULT

RED FLASH
ORANGE FLASH
RED FLASH
GREEN FLASH

CHARGE RATE

Normal Full Charge STEADY GREEN
Normal Fast Charge STEADY ORANGE

The Emergency Fixture will automatically perform the following system tests:

MONTHLY TEST: 1 MINUTE LAMP OPERATION

Battery Condition Transfer Switch Operation Battery Charge Rate Connected Load Continuity

ANNUAL TEST: 90 MINUTES LAMP OPERATION

12 months from the date of installation, an annual test is required by initiating full operation of the emergency load for 90 minutes, in compliance with NFPA Life Safety Code 101.

(1) **Standard System:** Periodic diagnostic tests will start at the same time the system was first activated with AC power.

NOTE: To avoid operation of emergency lighting at potentially undesirable times, automatic operation can be disabled by specification of Option "NAT", as designated in the Model Number Label. If such option is supplied, the annual test must be activated manually.

TESTING EMERGENCY OPERATION

Press the PUSH TO TEST button(3 seconds) to operate fixture in emergency mode for one minute test. Lamp can be checked visually during this period. Alternatively; (a) AC power to the fixture may be interrupted by qualified personnel.