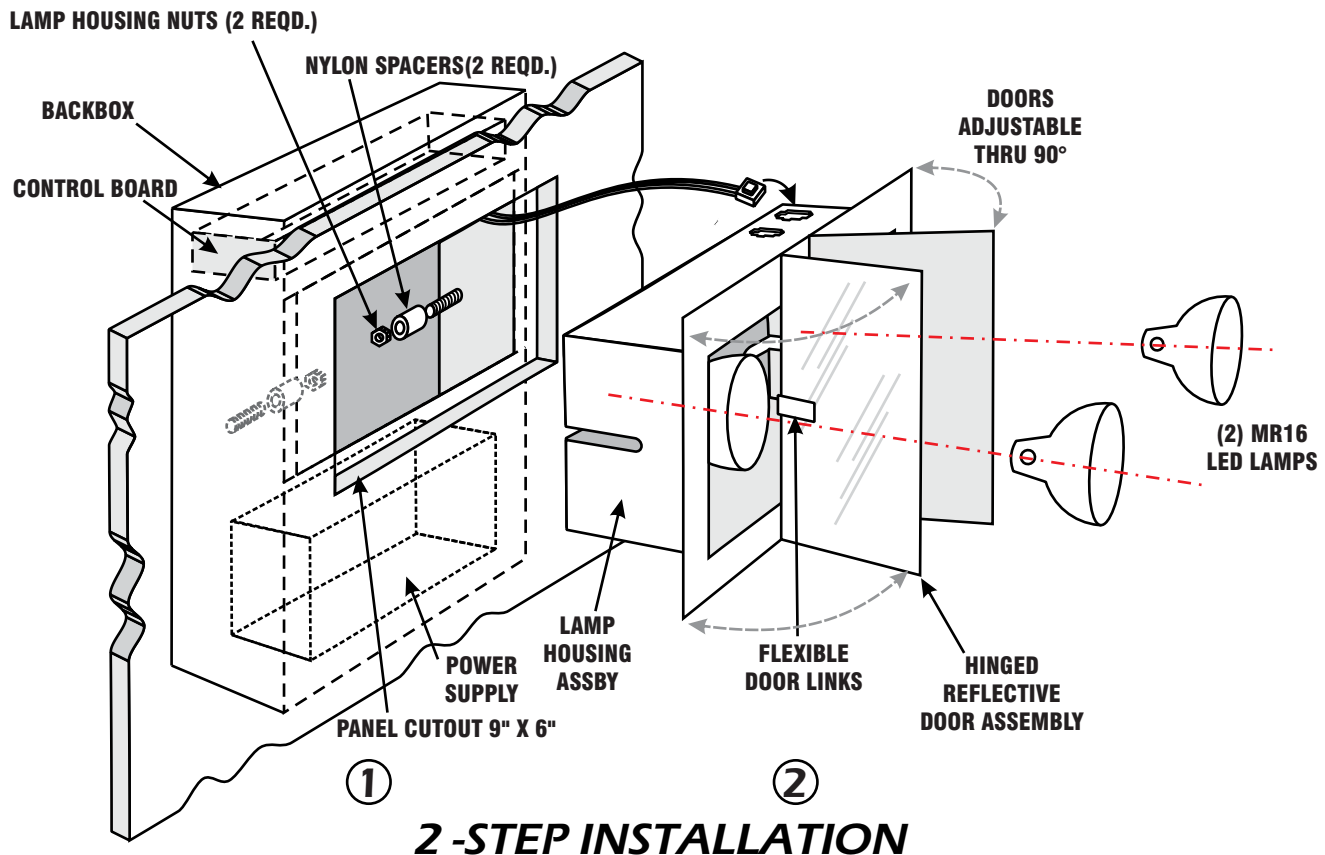


# Installation Instructions & Users Manual



## **IMPORTANT SAFEGUARDS** **READ AND FOLLOW ALL SAFETY INSTRUCTIONS**

Before connecting to power supply, **TURN OFF ELECTRICAL POWER AT CIRCUIT BREAKER OR FUSE**

Disconnect AC power before servicing.

Refer to wiring diagram for proper connections.  
All servicing should be performed by qualified personnel.

Consult your local building code for approved wiring and installation.

Do not use outdoors.

Do not use this equipment for other than intended use.  
Suitable for indoor damp locations.

Do not let power cords touch hot surfaces.

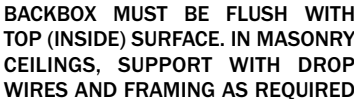
Do not mount near gas or electric heaters.

Mount and secure the fixture at a location and height to avoid ready access and tampering by unauthorized persons.

The use of accessory equipment is not recommended by the manufacturer and may cause an unsafe condition.

## **SAVE THESE INSTRUCTIONS**

## TOP MOUNT



## Backbox Installation

### WALL MOUNT

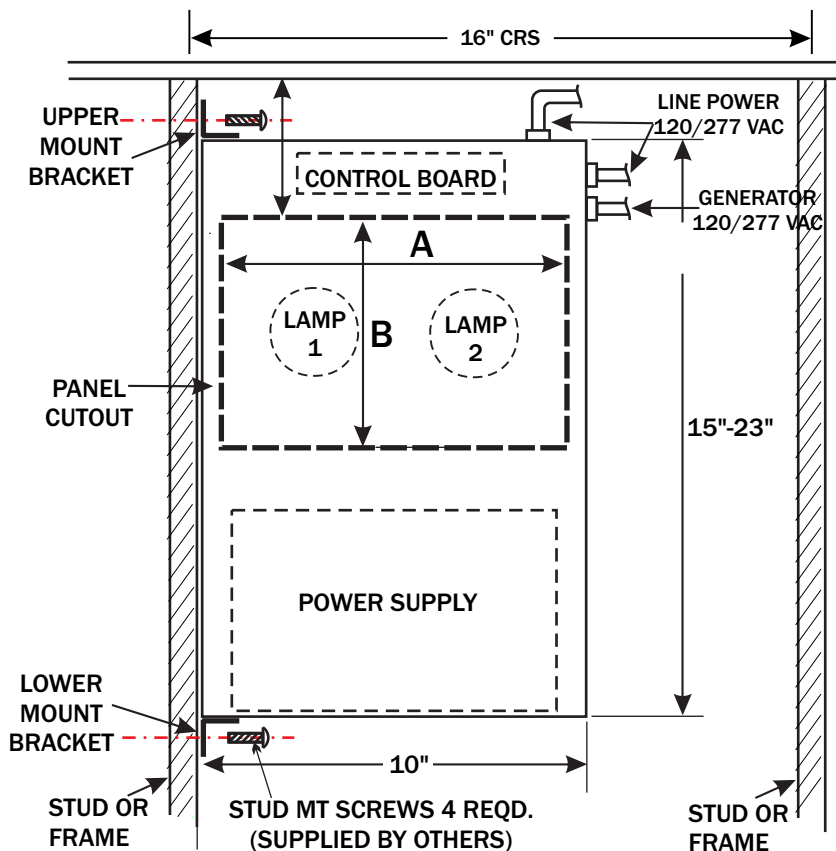
1. Backbox mounts to stud on either left or right side. Select side to mount and attach upper and lower mount brackets with (4) #6-32 sheet metal screws provided.

2. See Table 1 below. Determine panel cutout location desired. Place backbox into position with face flush or just below stud face. Mark mount bracket hole locations.

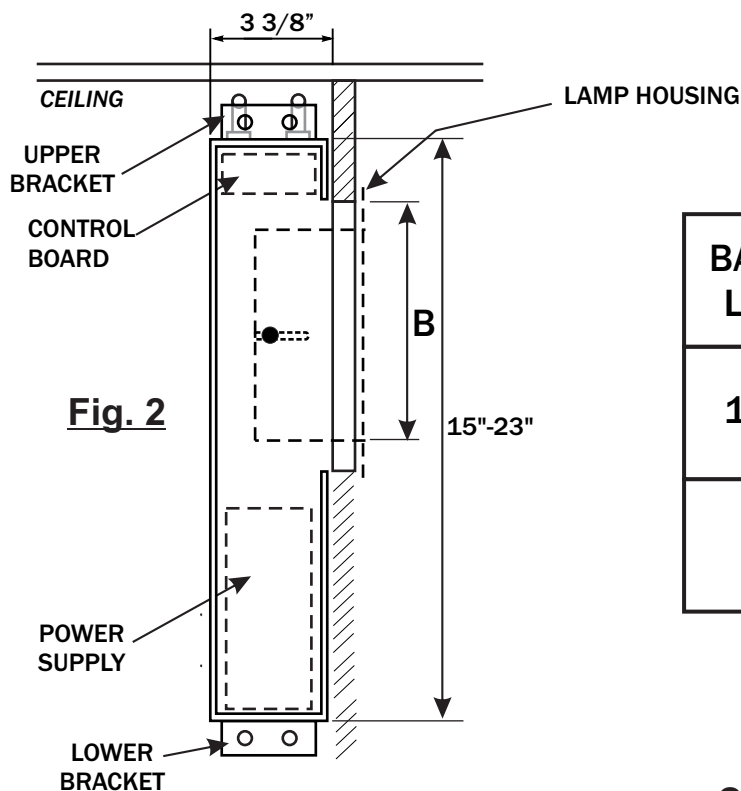
NOTE: Upper bracket holes should be a minimum of 3" from upper joist or ceiling panel.

3. Drill pilot holes in stud at marked locations, and mount backbox in position with (4) mount screws installed firmly.

Both upper and lower mount brackets must be used. Fixture weight may be up to 50 lbs.



**Fig. 1**



**Fig. 2**

**Table 1**

BACKBOX LENGTH	PANEL CUTOUT	
	A	B
15 1/2"	9"	6"
23"	9"	6 5/8"

## ***Backbox Wiring Instructions***

**BEFORE INSTALLING OR CONNECTING PRIMARY POWER WIRING,  
DISCONNECT MAIN POWER AT CIRCUIT BREAKER.**

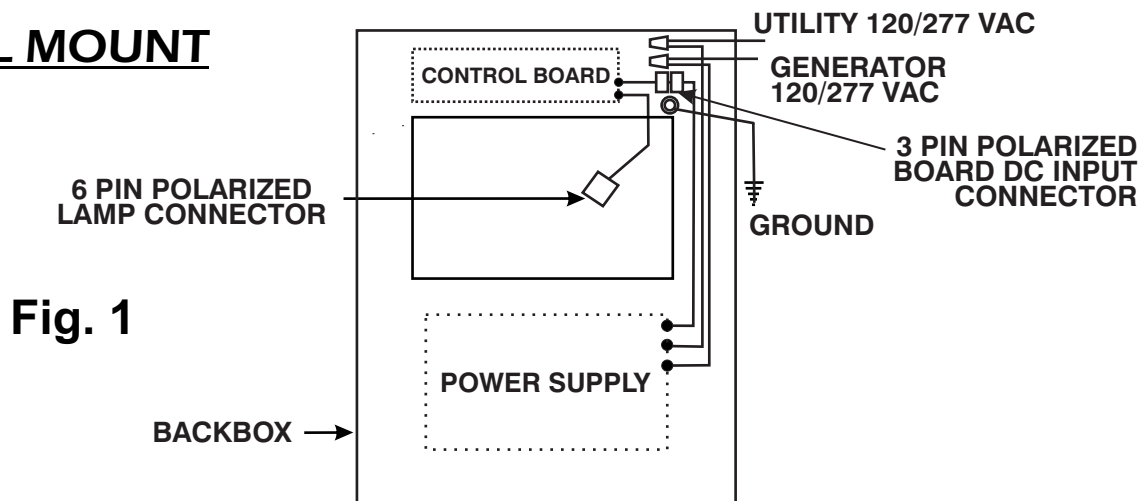
### **POWER SUPPLY & CONTROL BOARD ASSEMBLY: WALL OR CEILING MOUNT**

1. See Fig. 1. Route Line and Neutral 120/277 VAC normal and generator input power wiring into back box (4 wires).
2. Install 7/8" connector and connect to power supply with standard wire nuts as shown. Place ground connector on stud and tighten down:

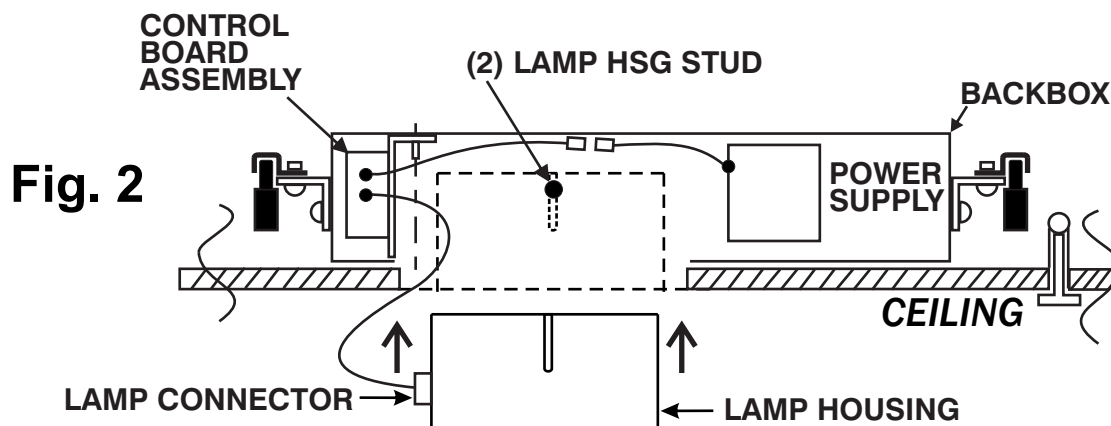
**BLACK: 120/277 VAC      WHITE: Neutral      GREEN: Ground**

3. Position AC leads and wire nuts at side of control board clear of output DC wiring.

### **WALL MOUNT**

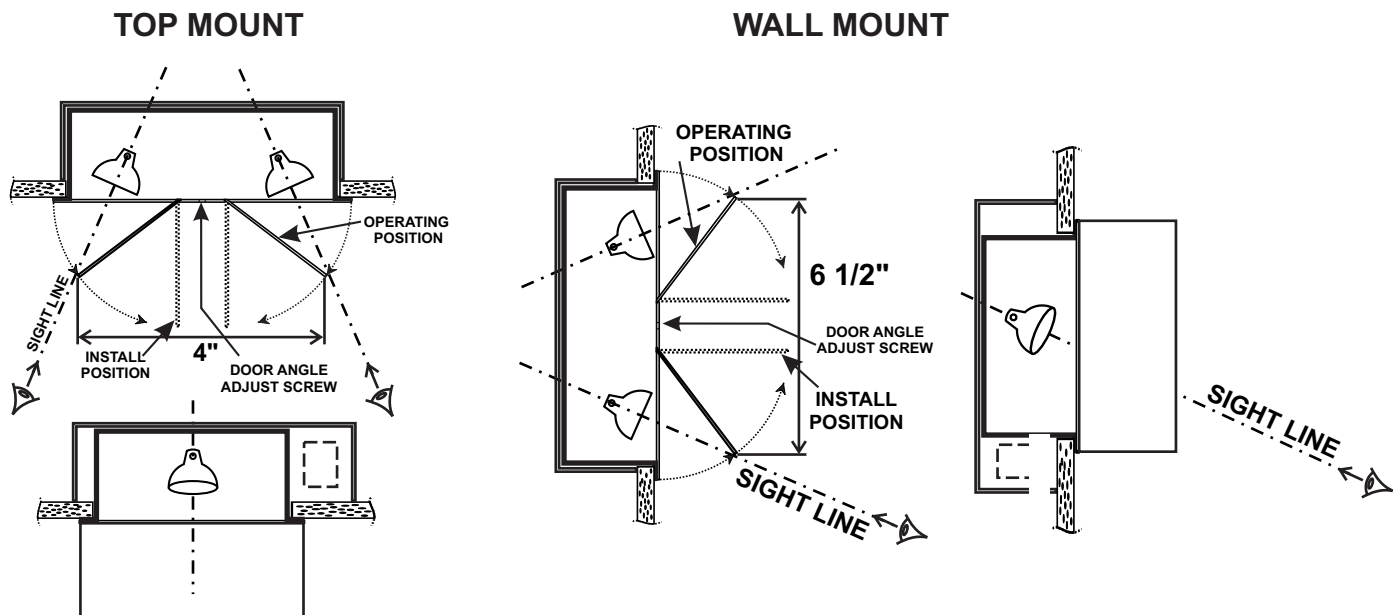


### **CEILING MOUNT**



# *Lamp Housing Assembly*

## Wall or Ceiling Mount



1. Open doors on lamp housing. Remove lamp boxes inside.

2. Plug male connectors from control board assembly into female connectors in lamp housing. Check nylon spacers are in place on two #8-32 studs in back box. Remove two #8-32 flange nuts, then slide lamp housing over studs until flange is flat against ceiling or wall finishing panel. Press housing flange firmly on to panel surface and tighten two #8-32 flange nuts supplied on studs.

3. Insert Mr16 LED lamps.

**4. STRIP OFF PLASTIC PROTECTOR FILM ON MIRROR DOORS BEFORE USE.**

**5. FOR CORRECT LIGHT DISTRIBUTION & DOOR OPERATION, SET DOOR ANGLE BY ADJUSTING STOP SCREW USING 9/64\"/>**

**DIMENSION BETWEEN DOOR EDGES WHEN FULLY OPEN.**

<b>WALL MOUNT</b>	<b>6 1/2\"/&gt;</b>
<b>CEILING MOUNT</b>	<b>3 7/8\"/&gt;</b>

6. To test fixture, turn OFF normal power to fixture & switch to Emergency Generator power after a delay of up to 3 seconds the lamps will illuminate and doors will open. when Normal power back ON a timer circuit will energize and after a delay of up to 5 seconds the lamps off and door will close.

## Troubleshooting

FAULT	CORRECTION
Lamps fail to operate when AC power is off and generator power is on.	Check lamps are fully inserted in sockets.
Doors fail to operate when AC power is off and generator power is on.	Manually open doors and confirm movement is free with no resistance. If movement is not free, check alignment of doors and hinges. Bent or buckled doors will require factory replacement. If movement is free, check terminal connectors on solenoid coil are in position and firm.
Doors do not stay closed when manually operated	Close doors electrically. Switch off AC line power, switch on generator power, then switch on AC line power to turn off generator power. After normal delay, doors will close fully.
Doors OPEN when AC power is ON	Check wire polarity connections to solenoid terminals as marked on frame: RED: POSITIVE, BLACK: NEGATIVE.

## Wiring Diagrams

