

### OVERVIEW

High-quality LED wall pack. The optional factory-installed Sigtex Emergency Lighting Control option ensures full emergency code compliance at the lowest possible cost.

### SPECIAL FEATURES

- **Emergency lighting from 1,400 Lm to 2,880 Lm with adjustable Emergency Lighting Control (ELC), powered from a Sigtex low-voltage central battery system. See Page 3 for details.**
- Provides a range of 1,900 to 3,300 nominal lumens and 126 to 145 nominal lumens per watt (lm/W).
- AC & DC Operation.
- Field selectable 3000k (warm white), 4000k (neutral white), and 5000k (cool white) color temperatures.\* (AC Operation Only)
- Long-life LEDs provide at least 70% of initial lumen output (L70) for >156,000 hours of operation, and at least 90% of initial lumen output (L90) for >47,000hours of operation.\*\*
- LED chromaticity based on <5-step ANSI quadrangles.
- LED color maintenance <0.003 chromaticity shift ( $\Delta u'v'$ ) over the initial 6,000 hours of operation.
- 0-10vdc dimming drivers are standard.
- Universal 120-277 AC voltage (50-60Hz) is standard.
- Power factor > 0.90.
- Total harmonic distortion < 20%.
- Color rendering index (Ra) > 80.
- Integral photocell is standard.
- Dark bronze, powder coat finish standard.
- Diffused polycarbonate lens.
- One 1/2" NPT threaded opening.
- Easy installation in new construction or retrofit applications.

\* Contact factory for other color temperatures and lumen packages.  
\*\* L70 hours are IES TM-21-11 calculated hours

PROJECT:

TYPE:

CATALOG #:



### WARRANTY & LISTINGS

- cULus listed for wet locations in ambient temperatures from -20°C to 50°C (-4°F to 122°F).
- IP65 rated for ingress protection.
- DLC premium approved.
- Complies with FCC Part 15, class B.
- Surge protection = 4kV.
- View Sigtex Warranty for further details

#### STANDARD



#### OPTIONS



### FIXTURE ORDERING INFORMATION EXAMPLE: WPE3L-RE-12-5K-NOR

WPE	3L	RE	12	5K	-	- NOR
SERIES	SIZE	OPERATION	SELECTABLE <sup>1</sup>		HOUSING COLOR	OPTIONS
			NOMINAL LUMENS	COLOR TEMP		
WPE	3L	AC 120-277V	SL 2000LM 2700LM 3300LM	SK 3000K 4000K 5000K	(Blank) Dark-Bronze	ELCXXP3 <sup>2</sup> Emergency Lighting Control <small>**XX*= VARIES WITH FIXTURE SIZE AND POWER. SEE OPTIONS TABLE FOR COMPLETE PART NUMBER.</small>
		RE 24V Remote from central battery	12 1500LM	5K 5000K	W White K Black A Aluminum X Custom	NOR Security Lighting

## EMERGENCY LIGHTING CONTROLS (ELC)

For use with Sigtex Lighting DC Central Battery System

MODEL	ELC10P3		ELC20P3	
	EPR <sup>1</sup> WATTS (MIN.)	EM LUMENS <sup>2</sup>	EPR WATTS (MAX.) <sup>3</sup>	EM LUMENS
WPE-3L	10	1400	20	2880

<sup>1</sup> Emergency power rating (Factory Adjustable).

<sup>2</sup> Nominal output at 5000K and Efficacy in Mid-Lumen Range.

<sup>3</sup> Maximum Emergency Power Rating (EPR).

### NOTE:

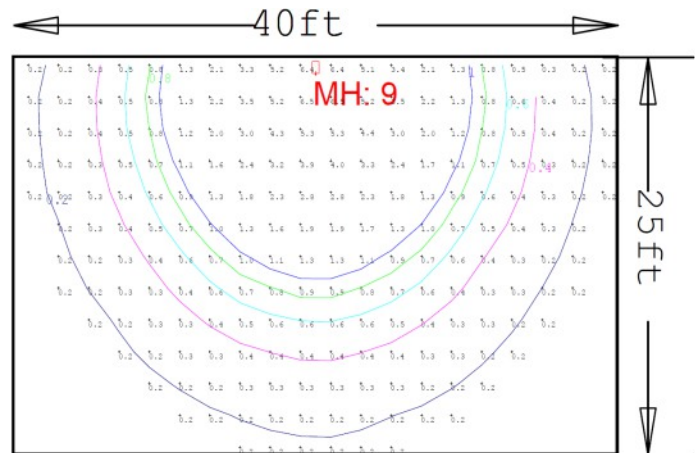
Emergency lumens are calculated based on efficacy in the MID-LUMEN range (5000K) from the Electrical Data Table. The value is adjustable through the EPR range shown above. For maximum efficiency, EPR should be set at the minimum level for compliance with NFPA Life Safety Code, based on photometric data for the fixture when installed.

To calculate lumen output within the EPR range given:

**Lumens = EPR (watts) x Luminaire Efficacy (Lm/watt)**

MODEL	ELC OPTION #	ELC POWER
WPE-3L	ELC10P3	10 Watts

EMERGENCY LUMENS	LLF	MOUNT HEIGHT	AVG. LUMENS ON PATHWAY	MAX/MIN UNIFORMITY
1400	0.51	9 FT	1.04 Fc	32.50



## ELECTRICAL DATA

Series	Measurements	Low Lumens			Mid Lumens			High Lumens		
		3000K	4000K	5000K	3000K	4000K	5000K	3000K	4000K	5000K
WPE-3L	Lumens	1939	2090	2105	2496	2709	2711	3070	3327	3325
	Watts	15	14	15	19	19	19	24	24	24
	Efficacy	132	145	143	129	143	140	126	140	137
	Input Current (A)	120V = 0.13A	120V = 0.12A	120V = 0.13A	120V = 0.16A	120V = 0.16A	120V = 0.16A	120V = 0.20A	120V = 0.20A	120V = 0.20A
		240V = 0.06A	240V = 0.06A	240V = 0.06A	240V = 0.08A	240V = 0.08A	240V = 0.08A	240V = 0.10A	240V = 0.10A	240V = 0.10A
		277V = 0.05A	277V = 0.05A	277V = 0.05A	277V = 0.07A	277V = 0.07A	277V = 0.07A	277V = 0.09A	277V = 0.09A	277V = 0.09A

## PHOTOMETRIC DATA

### WPE-3L

#### Luminaire Data

Description	Economy Wall Pack 3L 5K
Total Lumens	3,325
Input Wattage	24
Efficacy (lm/W)	137
Max. Cd.	914.57 (360H, 24V)
IES Classification	Type IV
Longitudinal Classification	Very Short

#### Zonal Lumen Summary

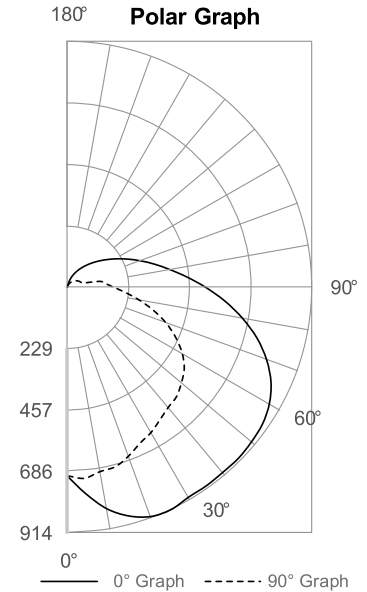
Zone	Lumens	%Fixt
0-30°	532	16.0%
0-60°	1,686	50.7%
0-80°	2,433	73.2%
80-90°	273	10.1%*
0-90°	2,705	81.4%
90-110°	353	10.6%
110-180°	0	0.0%
0-180°	3,325	100.0%

\* 80-90° glare zone is calculated by dividing the lumens in that zone by the lumen total in the 0-90° zone

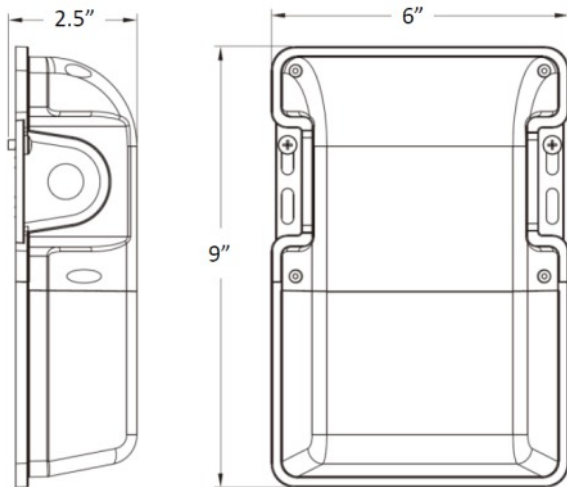
#### Luminaire Classification Systems (LCS)

LCS Zone	Lumens	%Lum
FL 0-30	340	10.2%
FM 30-60	887	26.7%
FH 60-80	634	19.1%
FVH 80-90	239	7.2%
BL 0-30	192	5.8%
BM 30-60	267	8.0%
BH 60-80	112	3.4%
BVH 80-90	34	1.0%
UL 90-100	205	6.2%
UH 100-180	415	12.5%
<b>Total</b>	<b>3,325</b>	<b>99.9%</b>
BUG Rating	B1-U3-G3	

#### Polar Graph



## DIMENSIONS



# NOTES